



OPUNAKE & COASTAL NEWS

Vol. 26 No 3, March 3, 2017
www.opunakecoastalnews.co.nz

Published every
Thursday Fortnight

Phone and Fax 761-7016
A/H 761-8206
for Advertising and Editorial
ISSN 2324-2337, ISSN 2324-2345

Inside



You can freedom camp at Middleton Bay. See Councillors Comment Page 4.



Oh no, what a waste! page 2.



Exciting possibilities for Waimate West Demonstration Farm. Page 20.



Roaring through the Taranaki countryside page 32.

Americarna spreading friendship across the seas

Summer finally arrived, just in time for the 10th annual Americarna to motor into Opunake.

On February 22, the town was dressed for the occasion, with American flags flying, shops kitted out in the good old red white and blue and locals dressed up in American costume. There was even the strains of Elvis being played along the sidewalk as the cars came along Tasman Street.

Bill Hayward of Fish Chips'n'More, well known for his map asking customers where in the world they come from had a map of the United States outside his shop so people could indicate those parts of the Land of the Free they may have visited.

Further along Tasman Street, Corkill Systems even



The cars lined up down the beach.



An effigy of Donald Trump greeted the visitors in the main street of Opunake.

had an effigy of Donald Trump.

The star spangled banner was wrapped around the statue of Opunake's favourite son Peter Snell, as befits someone who has made Texas his home.

Vehicles arrived in town from New Plymouth shortly after midday and wended their way to Opunake Beach.

This year there were 810 entries, compared to around 600 last year. Despite the larger number of entries, things were running smoothly, co-ordinator Toni Fabish said.

"We have a traffic management plan to make the flow of traffic the best we can. The Opunake people have done a fantastic job on traffic

control and parking, and there's been no congestion problems."

Toni has been involved with Americarna for the last nine years. *Continued page 12*



The sign says it all.

Apology

In our front page article in the last issue of the Opunake & Coastal News entitled 'Guilty of rape and other charges', it was stated that Mr Smith made the comment "You'll be all right" to the complainant.

This comment should have been prefaced with the word allegedly.

We only attended the case briefly and quoted from other reports of the case.

We apologise for this omission however and for any offence it may have caused.

NEW INSTORE



\$9.99 KG

Introductory Special

Lamb Shoulder Chops

Shop local and support your community



4 SQUARE 45
77 TASMAN ST
OPUNAKE
06 761 8668
OPEN 7am to 9pm EVERYDAY!

Penniall Jordan

PLUMBING • HEATING • GASFITTING

The heat is on!

Servicing Taranaki Since 1973

191 Broadway – Stratford Ph 0800 765 533

www.pennialljordan.co.nz

5918381AA

Headstone Warehouse
 WHERE YOU GO FOR HEADSTONES

33 High Street,
 HAWERA - Ph: 06 278 5518

209 Coronation Ave,
 NEW PLYMOUTH - Ph: 06 759 9975

www.HeadstoneWarehouse.co.nz
 EXCEEDING THE STANDARD SINCE 1914

RENTAL VEHICLES



- CHARTER BUSES
- VANS
- TOUR BUSES

ALUMINIUM SCAFFOLDING FOR HIRE
 \$35 per day, \$50 weekend.
 More than 6 days \$30 per day.

WATERBLASTER FOR HIRE
 Petrol 3000 psi 15L/minC
Cost: Half day \$90, Full day \$120, Weekend \$130. Friday after 3pm return Monday 9am.
 Bond for waterblaster and scaffolding \$50.
 For more information contact Tracey or Christine at

PICKERING MOTORS
 11 TENNYSON ST OPUNAKE PH (06) 761-8363
 0800 22 11 20 Email: pickering.motors@xtra.co.nz



If you love Jesus Christ and want to know more visit:
www.messagechurch.com

We are an independent Bible Believing Church

OPUNAKE & COASTAL NEWS

Registered office: 23 Napier Street, Opunake
 PO Box 74, Opunake

Telephone and Fax: (06) 761-7016 a/h ph: (06) 761-8206

e-mail: Advertising ads@opunakecoastalnews.co.nz
 Editorial editorial@opunakecoastalnews.co.nz
 Accounts accounts@opunakecoastalnews.co.nz

website: www.opunakecoastalnews.co.nz

Editor Bernice M°Kellar -
 Journalists/Sales Rolland M°Kellar
 Bryan Kirk

Advertising/Production: Vanessa Smith
 Tina Chapman

Delivery: Thursday, fortnightly
 Registered as a newspaper.



The Opunake and Coastal News is distributed free to every home and business within the rural area bounded in the north by the New Plymouth city border, extending east to Egmont Village, and around to the edge of Stratford, south to the Hawera city border and inland to Kaponga and through Eltham.



Letters to the Editor

Keep Easter Sunday

Easter Sunday is the pivotal and most important day in the Christian calendar. It is a Holy Day, a day when Christians celebrate the Risen Christ; a holiday for all to enjoy.

For those who would be obliged to work !!!!!@ (apart from those shops already exempt from the rule) let Easter Sunday remain as it is, an oasis of refreshment and peace.

L. Hall Family
 Pungarehu

Farewelling our singers

It's always sad when we hear about any top entertainers, musicians, actors or actresses passing away, no matter where they may have lived in the world.

In our country we have had our fair share of losing many

top entertainers like Rob Guest who I sung on stage with at the Queen Elizabeth Stadium at Rotorua at a New Zealand Jaycee Convention Ball where over 300 people were in attendance.

Then there's Billy.T.James, Bruno Lawrence, Howard Morrison and many other top Kiwi performers , and just recently Ray Columbus OBE and Bunny Walters.

Every year our North Taranaki Young Farmers would hold a huge cabaret at the Star Gym in New Plymouth. The Star Gym was packed out and was the best cabaret night ever staged in Taranaki.

At our TSB Bowl of Brooklands they had once a month Sunday afternoon concerts. We had Bunny Walters as guest artist and I was in the Royal Image Band which backed him.. The Royal Image Band had Donald Ingram(drums,

Send your your views to:
 Letters to the Editor
 23 Napier Street, Opunake.
 Fax: (06) 761 7016
 email: editorial@opunakecoastalnews.co.nz
 You are welcome to use a pseudonym but must supply your name and address to us.

vocals), John Horton(bass guitar, vocals), Chris McIntosh(guitar, keyboards, vocals), Tom Stephens(lead guitar, vocals). On that particular Sunday the Bowl was somewhat full of people.

Today's music is sadly not what it was in the 40s, 50s, 60s, 70s and 80s.. Also gone is the cabaret scene. Maybe they should start up again.

Tom Stephens
 New Plymouth

Swiss farmers

It's not that often we hear or see here in Taranaki of a couple like Nadine and Matt Gugi (Opunake and Coastal News February 3) who are contracted to milk 230 cows on Grant and Marina Gopperth's 70 hectare farm at Kapuni.

Before coming to Taranaki, this couple milked 46 Brown Swiss cows and leased a farm

from Matt Gugi's family in a village called Zuben, and grew maize, grain crops, and ran an orchard.

Matt has a Diploma in Agribusiness management and is one five entrants vying to be 2017 Taranaki Share farmers of the Year.

To me, it's pleasing to see people like the Gugi couple being fully involved in our farming industry here in Taranaki, so let's all remember it's not a matter of who or where our farmers come from. It's a matter of sharing, helping and being in constant communication , which is extremely vital for our farming industry to flourish in our province, so all coastal farmers should keep working together for the betterment of farming.

Tom Stephens
 New Plymouth

Effective delivery is vital

Every fortnight we produce over 9,000 newspapers, free to all homes and businesses in our circulation area, which encircles Mount Taranaki and includes north to the edge of New Plymouth and south to the edge of Hawera. No one should be receiving their newspapers later than Friday, as that is our official publication date. Hopefully, many will get theirs on the Thursday.

If the newspaper is delivered late, or not at all, our readers can miss out on important events advertised or maybe special deals in shops.

We get various calls (or visits) from irate people who've not got a newspaper. However, advertisers are often even crosser as they are likely to have lost revenue if their advertising is seen

too late. In this situation we cannot charge.

It is important that our delivery people let us know if the number of newspapers dropped off doesn't tally with requirements. With new buildings going up and people moving the numbers can fluctuate. If we know we can easily arrange for more (or less) newspapers to be dropped off to our delivery people.

Imagine our shock to receive a phone call from one of our residents to inform us that the best part of a hundred newspapers had been dumped in bushes on their property (Yet they didn't receive the same newspaper in their letterbox!). Neither did their next door neighbour.

Someone else found half a dozen of the same



The dumped papers.
 newspapers had been jammed in their letterbox, while a man nearby had no newspaper.

We weren't very pleased, to put it mildly.

Keep us up to date if there are problems and we'll do what we can to remedy the situation.



- New Houses
- Alterations
- Roofing
- All Farm Buildings
- Kitchens
- Decks

For all your building requirements, contact us today
HEARTLAND CONSTRUCTION
 48 Allison Street - Opunake - Taranaki - Phil on 027 236 7129

IHAIA MOTORS
 for
A GRADE REPAIRS

- Tyres
- Lubes
- Panel beating
- Farm Bikes
- All mechanical repairs
- Insurance work
- Radar Detectors
- Batteries
- W.O.F
- Painting
- LPG

AT COMPETITIVE PRICES.
 Tasman St, Opunake
 Ph (06) 761-8502



Driving home on the Surf Highway several nights ago.

EDITORIAL

Freedom camping allowed at Middleton Bay...apparently

It's pleasing to see that apparently despite two signs prohibiting freedom camping, one at the end of the road to Middleton Bay, and a short distance away another, that people are apparently allowed to freedom camp at Middleton Bay according to South Taranaki District Council councillor Clem Coxhead. (see Councillors Comment page 4 this issue).

Tourists could be forgiven for assuming they cannot freedom camp there though. Two such signs in a relatively small self-contained area is certainly giving a message. And it's being heeded. No one was

camping at Middleton Bay on the eve of going to print but instead had chosen to park up and pitch tents on the grass verge overlooking the picturesque bay. I

If there is an area in Middleton Bay where people can camp then I think perhaps yet another sign should be erected stating this.

Meanwhile it's great to see freedom campers obviously appreciating the beauty of the region albeit from the clifftop.

The recent sunsets have capped some glorious summer days. As I was entering a gloomy Wellington several years



Campers watching the disappearing sun on the clifftop overlooking Middleton Bay.

ago I overhead former New Plymouth mayor Peter Tennent being interviewed over National Radio stating, 'we live in paradise up here'. Last night watching an orange ball gradually

sink into the sea against a shimmering orange sky, it certainly felt like it.

So welcome freedom campers, spread the word.



Sign 1 as you enter Middleton Bay.



Sign 2.

B & R Barron BUILDER

- Houses
- Alterations
- Decks
- Bathrooms
- Kitchens
- Roofing
- Fences
- Concrete
- Cowsheds
- Farm Buildings

2475 Surf Highway 45 OKATO
 PH/FAX 06 752 4044 MOBILE 0274 448106
 Email: barronz@xtra.co.nz

"Let's create your business growth strategy together"
 Your only local community accounting firm

HUGHSON & ASSOCIATES
 Accounting for the future, today

Hawera - Opunake - 06 278 4169
 OPUNAKE OFFICE
 OPEN EVERY WEDNESDAY FROM 10am TO 3.30pm

Garage Doors Specialists

Rylock

WINDOWS • DOORS • CONSERVATORIES

- Sectional, Roller, Tilt.
- Automatic Openers
- Repairs & Maintenance

Call for a Free Measure & Quote
 Ph 06 7588073

A BLOCKED DRAIN!!?

"Septic Tank emptying South Taranaki wide"

TARANAKI DRAINCLEANING LTD
 Sid Wilson Owner/Operator
 Novafloe/Culvert/Shed to Pond/Domestic
 P.O. Box 149, Hawera 4610
 027 7411792

We welcome your letters
Please send to
editorial
@opunakecoastal news.co.nz

LOVE YOUR HEARING

Lisa Keen + Hearing Aids @ Coastal Care in Opunake

Lisa Keen Audiology is Opunake's only full service hearing clinic.

Hearing tests | Hearing Aids
 Wax removal | Tinnitus
 ACC specialist

Call 0800 555 676 today
 appointments are limited

Opunake, 26 Napier Street
 www.keenaudiology.nz

lisa keen audiology

COUNCILLOR'S COMMENT



Clem Coxhead
 It was an interesting experience this week being welcomed into my home town. The Councillors of STDC met informally for two days to spend time

going over issues and situations that are outside the normal constraints of agendas. A great part of this time is to get to know fellow councillors so that we can better represent the community in a spirit of harmony.

Mayor Ross Dunlop and Deputy Mayor Phil Nixon and myself accepted an invitation from two residents to join them on a walk around the town first thing on Wednesday morning to give us a greater insight into

Let's get it right on freedom camping

things that are being done and issues that we all need to be addressing. Not many towns do that sort of thing.

At the end of our meeting the Americans hit town and it was a super special day for all seeing the hundreds of cars arrive. These folks and our retailers provide us with a great opportunity to come to town and spend some money. I hate to guess how much it costs our guests to participate in "Americarna".

Freedom Camping is our latest Hot Topic. If I had children travelling around the world in wee vans I would expect something like the following

1. I would expect my children to be clean and tidy.
2. I would expect my

children to be respectful of the people and the country in which they are guests. If they are not then shame on them, but greater shame on me as their parent.

3. I would expect the folks whom they meet will be friendly and helpful to my children and be prepared to help them if they need it.

Finally I would like to respond to an editorial about freedom camping which appeared in this paper on Friday February 3 as there were a couple of mistakes which need correcting. These relate to comments stating that the Council had banned freedom camping at Middleton's Bay and at the Recreation Centre. This is not correct. Freedom

camping has been prohibited in the half of Middleton Bay by the boat ramp (so vehicles don't get in the way of boats) but it is permitted on the other half (by the driveway). Similarly at the Opunake Recreation Centre freedom camping has been prohibited at the front (eastern side) of the building, but self-contained freedom camping is permitted on the western side of the building in the other car park. I fully agree with the sentiment in the editorial that our district needs to encourage and welcome visitors, including freedom campers, to our district. Freedom Campers make a substantial contribution to our economy. They spend more and stay longer on average than other tourists and the vast majority

are respectful, law abiding visitors. However we also need to balance that with protecting our communities and the environment.

Having a bylaw actually gives us some tools to manage freedom camping in our district. We know we haven't got it quite right. It's the first summer with the bylaw and we will be making improvements as a result of the things we have learned - but this is a NZ wide issue that districts across the country are grappling with. Here in South Taranaki we want to work with our community, with other councils and with government to develop long term solutions because it's in everyone's interest to get this right.

HOW TO BE RUBBISH FREE



- Specialising in:*
- * FRONT LOAD BINS (1.5m TO 4.5m)
 - * JUMBO SKIPS (9m)
 - * SUPA SKIPS (6m)
 - * LOW SKIPS (4m)
 - * 4 x 4 BINS (1.8m)

INGRAM'S Locally owned & operated
 Hawera - Stratford - Opunake PH: 06 278 4786

HARDINGS
 FUNERAL SERVICES LTD
 17 REGENT ST HAWERA

Our professional attention to detail & empathy is our hallmark

PHONE 06 278 8633
 SERVING OUR COMMUNITIES FOR 3 GENERATIONS

Craig Corrigan ELECTRICAL
 OPUNAKE

- Generators Pto + Diesel Sets
- All Cowshed Wiring
- Farm Control Systems
- Domestic Wiring
- Electrical Inspections

*No job too big or too small
 Wiring the Coast - 20 years experience
 Ph: Craig on 027 207 7775*

Special contribution recognised by Opunake RSA

A woman who has been knitting poppies for the RSA for many years has been recognised by the Opunake RSA.

Joanne - she prefers to be known as Jo - who lives in Wales has been knitting the poppies in all sorts of colours for many years and sending them out to her younger sister Debi Whitehead who lives at Oaonui. Debi accepted the special certificate of appreciation from the Opunake RSA on her sister's behalf.

She's a special person. That's a gift. To make the poppies and send them out for many years. "It's a sacrifice of your time and then to give the money to our organisation

The poppies that have so come to symbolise those who died in all wars originated from the poem Flanders Field which talks of the red poppies that "blow between the crosses, row on row" in Flanders Field, Belgium. It was promoted as a symbol of remembrance by Moina Michael, a volunteer worker for the American YMCA.

The annual poppy appeal



Debi Whitehead accepting the special Certificate of Appreciation from Shane Butler, President of the Opunake RSA. At left is Brian Vincent who is on the Executive Committee of the Opunake RSA and at right Geoff Williams.

goes back to 1924-25.

The proceeds from the annual appeal goes towards the welfare of returned servicemen everywhere.

Referring to the generosity of Jo, Geoff said "We appreciate this more than anything," commented Geoff Williams, Care Advisor with the Opunake RSA. He added that all money raised in Opunake in the annual Poppy Appeal is used for the welfare of members of the Opunake RSA and their families.

Debi said that Jo crochets poppies for a hobby and has been doing so for years. "Ever since she could crochet." She still does them. "People like them," said Debi adding that her sister does a lot of craft. Jo has visited Opunake and was here last year. Debi originally came from Birmingham. The family later shifted to Wales where her parents still are. They have also visited Opunake.

"They love it over here," said Debi whose twin sister is currently visiting and due to return. She has been here for three months.

During the early days of the Second Battle of Ypres a young Canadian artillery

officer, Lieutenant Alexis Helmer, was killed on 2nd May, 1915 in the gun positions near Ypres. An exploding German artillery shell landed near him. He was serving in the same Canadian artillery unit as a friend of his, the Canadian military doctor and artillery commander Major John McCrae.

As the brigade doctor, John McCrae was asked to conduct the burial service for Alexis because the chaplain had been called away somewhere else on duty that evening. It is believed that later that evening, after the burial, John began the draft for his now famous poem "In Flanders Fields".

NEED A SHED?
 "We'll See You Right"

We have extensive experience with over 3000

- * Barns
- * Implement Sheds
- * Utility Sheds
- * Stables
- * All purpose Farm Sheds

We are fast, efficient and economical.
 Free onsite visit to discuss all your requirements

STRATFORD

75 WARWICK RD, STRATFORD - 765 7800

HELE Specialists in on farm installations and repairs

For quality advice and service
Ph: 0800 200 210

..... make the connection
 E: info@helectricalservices.co.nz

H.E.L. Electrical Services Ltd

Now servicing the Okato area!
 New Plymouth - Inglewood - Okato
 Ph: 06 756 7529 - F: 06 756 7502

Opunake District RSA looks to boost club numbers

The Opunake District Returned and Services Association would like to recruit you to continue the legacy of remembrance to all who have paid the ultimate sacrifice for this country, and for all those who have served in the military. You do not need to have served in the Armed Forces to become part of the RSA – what you do need is the passion and will, to ensure current and future generations of New Zealanders can pay tribute to those who have sacrificed for our country - while also paying respect to those who have served in recent conflicts, and who continue to serve today.

While honouring the past is an important part of who the RSA are, we're also focused firmly on the present. Support is at the heart of what we do. We support past and present service personnel and their dependents in a variety of ways. As a member of the RSA you can assist us in organizing events and commemorations, help us as a volunteer in our annual Poppy Appeal, and in many other ways.

The Poppy Day street collection is held each year on the Friday before Anzac Day. RSA volunteers exchange distinctive red poppies for a donation to the Poppy Appeal. In Opunake, we like to also canvas the town and go door-to-door, for which we need more volunteers.

The annual Poppy Appeal is the primary source of funds for the RSA's extensive provision of support services to war veterans and the ex-service community. You don't have to be a member of an RSA to benefit from the Poppy Appeal assistance. Donations are used to support veterans as well as ex-servicemen and women, and their dependents living in the community where the funds are raised. The poppy reminds us of sacrifices made – both past and present. Poppies were the first flowers that grew in the battlefields of Flanders in Belgium during World War One and are a symbol of remembrance and hope.

Membership of the RSA brings a range of benefits, easy access to welfare and pensions advice, encouragement, advocacy, and a network of people who can understand your experience - because they have been there themselves. You will have access to many members-only promotions from financial institutions and other companies. You will be issued with your own RSA Club Card which

entitles you to some great discounts at Auto Super Shoppes, Beaupaires, Blackwoods Protector, Carters, Dulux, Hertz, Ideal Electrical, Mainly Books, Mico Plumbing, Noel Leemings, OfficeMax, Placemakers, Repco, Thrifty NZ, and Vehicle Testing NZ and other companies.

When you join the Opunake District RSA you can become part of the Opunake Fire Brigade Social Club and can enjoy comradeship and cheer at the Fire Brigade/RSA Clubrooms. The bar is open every Thursday night. As a member of the Opunake District Returned and Services Association you will also belong to other Affiliated RSAs and Chartered Clubs. You will have a "home away from home" at any RSA throughout New Zealand and can always be sure of a warm welcome. Our members are also welcome at affiliated service clubs in Australia, the UK, Canada and many more countries as a result of the RSA's affiliation to the Royal Commonwealth Ex-Services League. At many RSAs you can grab a coffee, relax with friends at the bar,

or enjoy a wholesome meal at a competitive price.

There are four types of membership options:

Returned Servicemen and women who have served in any war or in a peacekeeping or peacemaking deployment as defined by RNZRSA.

Service members are either retired or serving members of the Armed Forces who do not qualify for 'Returned' membership. They include those who have served under CMT, the Territorial Forces, Cadet Force Officers and sworn members of the New Zealand Police.

Associate membership is open to the members of the community eighteen years of age and over, who have not served in the armed forces or police, identify with and support the aims and ideals of the RNZRSA

Annual fees are \$25.00

The Opunake Women's Section is also looking for new members. There are more than 150 RSA Women's Sections throughout the country, with nearly 16,000 members.

They offer a range of welfare and support services to ex-service personnel and families, as well as the wider

community. Membership is open to near relatives of Returned and Service personnel, specifically wives and partners, widows, mothers, sisters, daughters and granddaughters.

Women who have themselves served overseas or in any other service capacity are also entitled to join Women's Sections, just as they are eligible to for Returned or Service membership of the RSA.

Application forms are available from Rev. Geoff Williams (06 761 8510), Shane Butler (021 1439336), Brian Vincent (06 761 8353), Bill Hayward (06 761 8478) or Gary Hunn (06 761 8864). For Women's Section enquiries please contact Betty Mackenzie (06 761 8869).

At the RSA, we believe in a nation joined by a heartfelt connection to the Anzac spirit of courage, commitment, comradeship and compassion; The Anzac spirit has always stood for 'All That Is Decent, Courageous And Just'. Please join us, and help us ensure this spirit lives on.

Shane Butler,
Acting President

Opunake High School 80s Reunion



Organiser Warren Bassett (centre in the blue shirt) said the event was an great night for everyone who attended and that someone else can sort the next one out.

Pictured are students who attended Otakeho and Oeo Primary Schools in the 1980s.

Photo: Ross Glover

L
A
W
Y
E
R
S

OPUNAKE LAWYERS Thomson O'Neil & Co.

Our Opunake Office is attended by:

Robert England on Wednesday & Fridays for buying and selling houses, farms & businesses; trusts, wills and estates.

Neal Harding on Thursday, for residential sales and purchases, family, district & criminal court matters, civil & business matters.

Stephanie Coulter on Tuesdays for employment matters, house purchasing and selling, refinancing and wills.

FOR ALL YOUR LEGAL REQUIREMENTS

30 TASMAN ST, OPUNAKE

PH: 761 8823



Trust,
Excellence,
Respect

No appointments needed
open from 8am until 8pm
7 days per week.

Taranaki's only ACC accredited urgent care and GP clinic with onsite pharmacy and x ray

A complete range of primary and acute care options

Walk in or call us today.

MediCross Urgent Care and GP clinic
8 Egmont Street • New Plymouth

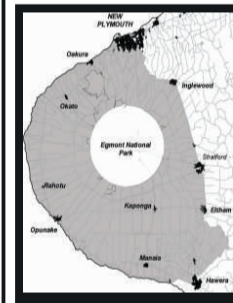
Phone 06 759 8915

Web www.medicross.co.nz

WE-7295409AA

WANT TO DO BUSINESS IN OUR AREA?

Talk to us today!



Opunake and Coastal News is distributed free to every home & business within the rural area, bounded in the north by the New Plymouth city border, extending east to Egmont Village and around to the edge of Stratford, south to Hawera city border and inland to Kaponga & Eltham. We want to be involved with your business. Call today and discuss your marketing options with us.



OPUNAKE & COASTAL
NEWS

Promote your business or event in our area, call us on:

Ph/Fax: 06 761 7016 - 23 Napier Street, Opunake or e-mail us: ads@opunakecoastalnews.co.nz

S.O.S

Specialist Outdoor Services

call 027 605 8437

31 King Street - Opunake



Specialist Outdoor Services include

3.5 ton Digger Hire, Landscaping, Demolition Work - Total Section Maintenance Tree Maintenance - Firewood Lawnmowing - Waterblasting - House Painting Removal of Greenwaster/Inorganic

25 year experienced independent contractor Taranaki owned

Contact: DAVE 027 605 8437



Early Childhood Education Centre

We are now taking Enrolments for 2017.
Don't delay as we have limited spaces.

Please ring Gloria: 06 752 4289 or 027 463 4644
2502 Surf Highway 45, RD37, Okato
SESSION TIMES 8.30AM - 3PM



Taranaki wide sales, hire and service.
Free delivery, competitive prices.

**MOBILITY SCOOTERS
and all living aids - we'll help you
with whatever you need.**

Kevin & Marilyn Bromell
154 PRINCES ST - HAWERA
Ph: 06 278 8072 - Freephone 0800 765 763
www.mobilityandmore.co.nz

All prepared but no one turned up

Well the Americarna has been and gone but we didn't get to show off our "car cutting skills" in Napier Street. We had planned to put on a demonstration using our "jaws of life" but the visiting vehicles were a little late arriving into town, and many of our crew just couldn't stay on any longer. Sadly, very few of the visitors strolled up from the beach to admire all of the hard work that many of the businesses had gone to. I do feel very sorry for the shop owners and the Opunake Business Association because they had done a lot of ground work to show off our lovely town. The visitors were content to stay at the beach, bask in the wonderful weather and go no further. As a consequence they also weren't present at our spot either (actually four locals and one visitor) so it would have been a waste of time carrying out our demonstration for so few.

Maybe next time, if we could have the cars parked up the main street, on the side streets leading down towards the beach and along the grassed areas along the beach top more people would venture up town. That way, visitors will get to see what we have to offer, get a good view over the cliff of the beach, our businesses will benefit and we could do our demo to a good sized crowd. Other towns have major roads blocked off so vehicles can park up allowing everyone to get a great view of them. Here Opunake folk have to park up on the beach top, walk down and then wander back up at the end of the day. There are however a lot of people who can't walk freely so have to



The Opunake Fire Brigade answered a callout to a cowshed on Kaweora Road.

miss seeing the cars up close.

Something has to be done so Opunake benefits from all of the hard work that goes preparing for the visitors. Many of our businesses go to a bunch of effort decorating their shops to help make Americarna a success, yet they miss out. We even set up a scenario for the day but had to can it. During a practice session for our demo, we sprung an oil leak on the hydraulic motor that runs the cutting gear, so we had to get a loan from the fire service to make sure we were ready for the day.

It was another "before eight" start for us on the morning of Sunday 19th, when we were dispatched to a flat on Tasman Street. The elderly resident had fallen on her knee, but luckily was still able to activate her St John's emergency pager for assistance. The Opunake ambulance was tied up on another call, so we were sent to investigate. After she was made comfortable on a

couch, we gave her an intense check over (blood pressure, breathing rate, pulse, responsiveness, alertness etc) and by then an ambulance crew from Stratford was at the door to take over.

I must say how wonderful the St. Johns emergency pagers are for people living on their own. In this case, we were sent as the local ambulance was tied up, so the patient had qualified personnel at her door within minutes to help. With this covering system in place, Opunake folk possibly have a team at their door quicker than those who require help in New Plymouth. Should you wish to find out more information about these pagers, get in touch with a local St John's Area Committee member, maybe Linda Campbell or Janice Burnand. These emergency alarms give hundreds of elderly folk and their whanau peace of mind knowing there is always help available at the push of a button.

We were called to an electrical fault in an old cowshed on Monday 27th. The farmer on Kaweora Road spotted smoke billowing from the cow shed at about 3:15pm and went to investigate. He was soon on the phone and our two appliances were despatched by fire control, which are based in Wellington. Our crew who were wearing B.A. were able to contain the fire to just around the meter box and save the rest of the shed. The shed is vital to the farm as it is part of the calf rearing operation and it would have been a massive blow to the farm owner if we weren't efficient and the whole lot was lost.

We then hung around for the Powerco guy to arrive to make sure the fuses had been pulled and the wires were safe. Once that was done we were on our way back to the station to refit the appliance for the next call out.

No Demo.

Outlook summary of temperatures

February – April 2017 temperatures are most likely (45-50% chance) to be near average for the north and west of the North Island and the east of the South Island. In the east of the North Island, February – April 2017 temperatures are about equally likely to be near average (45%

chance) or above average (40% chance), and seasonal temperatures are about equally likely to be near average (40% chance) or below average (35% chance) in the north and west of the South Island.

February – April 2017 rainfall totals are most likely to be below normal (45%

chance) in the north and east of the North Island, and equally likely to be near normal (40% chance) or below normal (40% chance) in the west of the North Island. Rainfall totals are about equally likely to be near normal (40% chance) or above normal (35% chance) for the west of the South

Island. Near normal rainfall is most likely (40% chance) for the north and east of the South Island.

February – April 2017 soil moisture levels and river flows are most likely (55% chance) to be below normal for the north of the North Island and about equally

Continued page 7.

Congratulations!

TOP 10 REGION
Taranaki,
New Zealand

lonely planet

BEST IN TRAVEL
2017

Opunake Fish, Chips & More

one of the reasons Taranaki has been judged
the world's #2 region to visit in 2017



OPUNAKE FISH, CHIPS & MORE
61 TASMAN STREET

Ph: 761 8478
SEE OUR MENU on FACEBOOK

BRIAN HILL BD HILL BUILDING

- *New homes
- *Alterations
- *Rotary cowsheds
- *Herringbone dairy sheds
- *Concrete driveways
- *Bridges
- *Pre-cast silage pits
- *Hay barns & implement sheds
- *Concrete races
- *Repair work

We are a licensed building practitioner and Master Builders member.
Experienced in the design and consent process.

0274 442 703



POWERWORX

Power Supply Rural & Residential

Design, upgrade and repair overhead and underground power supplies

- Powerco Approved
- Underbores - wires and pipes
- Powerline maintenance
- Fault repair
- Subdivision power installation
- Vegetation control around powerlines
- Network connections
- Transformer & line upgrades
- Specialists in rural power servicing and installation

0800 877 746

Taranaki Region
Contact Bruce Wilson Manager
58 Glover Road, Hawera Ph: 06 278 4514
Email: powerworx@obertech.co.nz

Lyn retires after 25 years in style

Ashley Heydon has “very reluctantly” let go his long time manageress Lyn Weir who has retired after 25 years working at Heydon Priest. Ash took all the staff out for a lovely evening at the Nice Hotel in New Plymouth where the champagne flowed. “It brought me to tears,” says Lyn. “It was very moving.” The next morning Lyn says she phoned Ash to thank him and a disappointed Ash responded that he thought she was phoning to say she’d changed her mind.

“It’s been a huge part of my life,” said Lyn of her time at the busy petrol station and garage. Lyn began working for Ash just after the Crafty Fox opened, and watched another of Ash’s dreams come to fruition, the relocating of the old railway carriage dubbed The Carriage, Oakura’s answer to the Orient Express, which for many years was run as a popular restaurant. She describes Ash as a very clever engineer who is teeming with ideas.

There was a brief interruption to her years at Heydon Priest when, in 2003, Lyn and her new husband Ian migrated to Australia on the Gold Coast where Lyn had an adult son. It wasn’t all easy. It took her 4 months to get a job in Australia and the job Ian had been promised fell through. Homesick, after a year they called it a day and returned to New Plymouth. It was “a lesson in life” said Lyn philosophically. It wasn’t long before Ash was on the phone offering

Lyn her old job back. Lyn says she didn’t hesitate. Over the years there’s been a number of “drive offs” – customers who don’t pay, a few break ins but she says she’s only once felt a bit intimidated by a customer. She talks amusingly of the annual Americarna crowd who were very particular about their cars. “You don’t touch their cars. You let them fill them.” And as for any Harley Davidsons. You don’t risk a fingerprint on their shiny machines. Lyn says she won’t miss the 6:30am starts though admits for the first three days of retirement she felt a bit “lost”. She’s a person who is punctual - “I can’t stand people who aren’t on time” - and believes in old fashioned customer service. “The one on one contact that makes customers feel that they’re special.” She says she became really fond of the older customers who in the early days used to come in for their weekly magazines which they would hand to them personally rolled up. “They were real special days.” In later years she was responsible for the ordering of all stock and other

bookwork though she would still help out on the forecourt till 10am. She says she’ll particularly miss the bin hire business which she described as her “baby” and enjoyed the contact with all the contractors with whom she had a “really good rapport.” Perhaps most though she’ll miss the early morning banter with Ash which used to amuse customers. A keen gardener and bowler, Lyn says she is enjoying retirement though hasn’t ruled out a bit of occasional relief work at Heydon Priest. Between times, Lyn and Ian who works at Flooring Xtra in New Plymouth, will be busy with the seven grandchildren they share. We wish Lyn all the best in her well earned retirement.

On this month in history Brunner Coalmine explosion

On March 26, 1896 there was an explosion in the Brunner mine on the West Coast of the South Island. A total of 65 men were killed. Some of the miners died from asphyxiation waiting for rescue. Four days (working round the clock) were needed to recover all the bodies. It was NZ’s worst mining tragedy.

US combat soldiers to Vietnam.

On March 8, 1965 3,500 Marines arrived in South Vietnam. They were not intended to be in the country for long. However, the war escalated – notably under President Johnson - and years later 60,000 US soldiers and 2,000,000 Vietnam were dead. President Nixon was the US leader who finally withdrew all American soldiers from Vietnam.



Lyn Weir (right) with Ashley Heydon (centre) and Judy Williams.

Meads Motorcycle Service
9 Main South Road Manaia
Ph 06 274 8216 Mobile 027 2104673

For all Your Farm Bike Needs

× CARPET × VINYL × TIMBER × TILES × RUGS

February - March '17

SALE

CATALOGUE OUT NOW

- × QUALITY SDN CARPET FROM \$29 PER SQM
- × NEW SEASON CARPET AND RUG RANGES
- × LINO FROM JUST \$27 PER SQM

www.flooringxtra.co.nz

CARPET YOUR HOME FROM \$3590*

12 MONTHS
NO PAYMENTS & NO INTEREST*
ON PURCHASES \$1,000 & OVER.

thinking about subdividing?

Contact Kathryn for your free consultation
Ph: 06 759 5040 | Kathryn.Barrett@btw.nz | www.btw.nz

btw company
surveyors . planners . engineers . land & g.i-s services

Proud to be local - BTW since 1973

CLASSIC CARPETS
Borrell Ave - WESTOWN
NEW PLYMOUTH
Ph: 06 753 3933

FLOORING XTRA

*Terms and conditions apply. Promotional pricing expires 31 March 2017, or until stocks are sold and can't be used in conjunction with any other offers. Only available at participating stores.
*Offer ends 31 March 2017. Lending criteria, \$50 Annual Account fee, Establishment fee or Advance fee, terms and conditions apply. See in-store for details.

Andrew Little Labour Leader



Labour Taranaki Office
21 Northgate
Strandon
New Plymouth

Office hours:
10am - 2pm
Monday to Friday
3 - 7pm Thursday

labour.taranaki@parliament.govt.nz
06 757 5662

Authorised by Andrew Little,
Parliament Buildings,
Wellington



Meeting the freshwater challenge

The Government has announced a target of 90% of New Zealand's lakes and rivers meeting swimmable water quality standards by 2040. This will mean an extra 10,000km of swimmable rivers and lakes over the next 23 years, or 400km a year.

This ambitious target will make us a world leader in water quality standards for swimming, which is important for New Zealand's growing tourism industry.

The plan is backed up by national regulations requiring stock to be fenced out of waterways, new national policy requirements on



Jonathan Young MP for New Plymouth

regional councils to strengthen their planning rules on issues such as sewage discharges and planting riparian margins, a new Freshwater Improvement Fund and new maps that clearly identify

where improvements are needed.

People want to feel confident they can enjoy water-based activities without getting a nasty bug. With this in mind we are working hard to return our rivers and lakes to a standard not seen in 50 years.

The Government is releasing maps to deliver the most comprehensive and consistent information on water quality for swimming. The maps are connected to the Land, Air, Water Aotearoa website where you can find real-time information on water quality. This information will help people make decisions on

where they can swim safely.

Reaching the 90% target by 2040 will take a collective effort. The goal to improve the quality of water is estimated to cost \$2 billion over the next 23 years.

As a Government we are committed to growing the primary industries at the same time as improving water quality. This brings both economic and environmental benefits. It also enables New Zealanders to safely enjoy recreational activities in our rivers and lakes.

Jonathan Young MP

'Public servant' an oxymoron

The cancer researcher; The aged care worker; The street sweeper; The eye surgeon; The special needs teacher; The missionary working in an orphanage in some far flung country; The emergency nurse in war torn Middle East; What do any of these people get paid? They see it as a vocation, but does that mean their remuneration doesn't have to stack up?

I just cannot get right in my mind the fact that the New Zealand Superannuation Fund boss Adrian Orr is on an annual salary of over \$1 million. That's an incredible average of nearly \$500 per hour - though he may well work more than forty hours per week as the rest of us do. My uneasiness comes from when I think about those cleaners or care workers who will be on \$15.75 an hour. The increase for the Super Fund's top person ended up at 23.4%, but had been suggested as being as high as 35.6%. In the light of the 3.2% rise in the basic minimum wage announced late in 2016, it's the magnitude of the increase

here for a civil servant that worries me.

Having never met NZ Super Fund boss Adrian Orr, I certainly would not begin to take anything away from the very advanced money management skills of the person who is entrusted to run this country's biggest investor. Nobody can deny that the returns are great and this bodes really well for us baby-boomers who are quite naturally looking a fair way ahead to some future years of financial security, courtesy of 'our' Superannuation Fund.

The stewardship of the people's pension savings is a position of supreme importance in New Zealand carrying some prestige and status. No doubt Mr Orr takes real pride in this extraordinarily important position, but when he goes I could safely predict that an equally proud and qualified person will take over the role. And in all of the publicity around the increase, there was never a suggestion that the incumbent was thinking of moving on if the pay increase



Hon Chester Borrows

didn't eventuate. So why isn't taking care of people's old age funds also a vocation? And what do we mean by a "public servant"?

Among the reasons given by the Super Fund Board for this meteoric and immediate increase in pay was the alignment with the remuneration of international peers. But, hang on, this is New Zealand and we are also talking about the public sector. I have a problem with the state paying massive salaries, especially when they are 'out of whack' with that of the Prime Minister or our

Chief Justice.

But this is really about the huge difference in remuneration amongst New Zealanders. Whilst I do not have a problem with the CEO of our Superannuation Fund receiving a reasonable three-figure salary in line with skills, experience and qualifications brought to the role, becoming the highest paid person on the public payroll is not appropriate here.

If you think about it, we need this role just as much as every care worker teacher aide, driver, cleaner or caretaker. Does it take as much cleverness to manage an underfunded household budget as thirty billion dollars? Once you've learned the basics of economics and investment isn't it pretty much like riding a bike? So the unbelievable chasm between what these citizens receive each hour (often part-time in unsociable hours) and almost \$500 for sixty minutes work is actually obscene.

Chester Borrows

COFFEE & CATCH-UP

Join me for a coffee at the Sugar Juice Café, Tasman Street, Opunake
Fri 10 Mar, 11am-12pm

JONATHAN YOUNG

MP FOR NEW PLYMOUTH

A: Corner Gill & Liardet Streets
P: 06 759 1363
E: newplymouthmp@parliament.govt.nz
W: www.jonathanyoung.co.nz

f Jonathan Young Mp
t jonathanyoungmp

Authorised by Jonathan Young MP, Cnr Gill & Liardet St, New Plymouth

Adrian Rurawhe MP for Te Tai Hauāuru

Labour Taranaki Office
21 Northgate
Strandon
New Plymouth

Office hours:
10am - 2pm
Monday to Friday
3 - 7pm Thursday

labour.taranaki@parliament.govt.nz
06 757 5662 | 0800 ADRIAN

Authorised by Adrian Rurawhe,
Parliament Buildings,
Wellington

Taranaki Councils consult on Easter trading

'To shop or not to shop,' - this is the question Taranaki's three district Councils are asking their communities.

New Plymouth, Stratford and South Taranaki district councils are all currently consulting about whether their residents want shops

open on Easter Sunday.

South Taranaki District Council group manager of environmental services, John McKenzie, says the councils decided to consult at the same time to make it less confusing for the public, which reflects the collaborative relationship

the three councils have.

"All three councils are asking the same three questions: whether Easter Sunday trading should be allowed throughout their district, or just in specific parts of their district, or not allowed at all," he says.

The move comes after the Government changed the law in August to allow councils to choose their own Easter Sunday Shop Trading Policies.

While Easter Sunday is not officially a public holiday in New Zealand, shops are required to be closed, although a number of shops like dairies, cafes, pharmacies, souvenir shops, garden centres and service stations are already exempt from the rule.

McKenzie says that Foodstuffs NZ, who own New World and Pak'n Save supermarkets, and Retail NZ had written to the councils asking for public consultation on the issue.

Public consultation in Stratford District runs until February 10, while both New Plymouth and South Taranaki close on February 20.

Chester Borrows MP FOR WHANGANUI

HAVE AN ISSUE OR NEED TO SPEAK TO YOUR MP?

Please email or phone to book a time to speak with Chester.

Hawera Office
11 Victoria Street
Ph: 06 278 4059
chester.hawera@parliament.govt.nz

MANA & Maori Party sign kawenata

“Been a long time coming, but it’s what the people have been calling for,” said Lisa McNab, MANA President about the agreement that will see MANA and the Maori Party carry a strong mandate to win all seven Maori seats.

“Standing against one another only lets the party that stole our foreshore and seabed, steal our seats as well. We have to be better than that. Those seats belong to the Maori people, not to anyone else.”

“Tuku came north last year to talk about how we might work together to bring those seats back to the Maori world, and ever since there’s been a real buzz in the Maori electorates,” said Lisa McNab

“From the race at Karapiro where MANA MAORI beat Labour easily to the delight of the crowd, to our going on to Ratana together, our taking a common stand at Waitangi, and out on the streets and in the maraes - the support has been awesome.”

“Monday February 20’s Kawenata (arrangement) formalises all of that. The



The eight signatories to the Kawenata signed on February 20 at Te Kapehu Whetu. From left: Maori Party members Hinurewa Te Hau, Tukuroirangi Morgan, Marama Fox, Te Ururoa Flavell. MANA members: Hone Harawira, James Papalii, Lisa McNab and Joe Everitt.

signing occurred in the morning at Te Kapehu Whetu, 185 Lower Dent Street, Whangarei.

“It allows MANA to focus on Te Tai Tokerau at the 2017 General Election, a decision we’d actually made at our AGM last year.

“And it adds weight to the Maori Party’s decision to stand candidates in the other 6 Maori seats (Tamaki Makaurau, Hauraki-Waikato, Waiariki, Ikaroa-Rawhiti, Te Tai Hauauru, Te Tai Tonga),

and we wish them all the best in their endeavours.

“Both parties have agreed to not stand candidates against one another.

“And both parties will be free to develop the policies they think best; to campaign for the party vote; and to criticise one another’s policies without attacking each other’s candidates.

“We’ve got a big job ahead of us” said Lisa. “Things are even tougher now for our people than they were when

Hone left, so we take nothing for granted.

“A recent Colmar-Brunton poll showing MANA registering in the ratings, even though we’re not even in parliament yet, was a pleasant surprise and public confirmation that MANA is back in the game.”

“That poll, coupled with the enthusiasm of the people and Hone’s track record, means we’re feeling really positive about 2017.”

Peters slams tsunami of bureaucratic nonsense

Too many school principals are being burnt out as they spend their days glued to computer screens and battling mountains of paperwork, says New Zealand First Party leader Winston Peters.

Mr Peters was speaking after opening new classrooms at Hora Hora School in Whangarei..

“Hora Hora, like most of our schools, faces huge pressure and those who bear the brunt of it all are principals who are struggling under a tsunami of bureaucratic nonsense coming from government,” he said..

“Funding is a major headache. Last month hundreds of New

Zealand principals said they couldn’t cater for special needs children because of insufficient support and funding. And things are not going to get better.

“Core funding for many schools around New Zealand has been frozen this year. Early childhood funding has been frozen for seven years.

“If the schools don’t have the money then they must turn to the parents for donations to help keep the schools afloat and when your school is in a community where there are few jobs and opportunities that makes things even harder.

“It just creates more stress for

those communities – while the divide between the haves and have-nots grows wider.

“As these problems go on some people are also pushing an agenda to privatise education, to create charter schools which are not required to have registered or trained teachers.

“The underlying purpose of charter schools is to make money for their owners. And these charter schools receive three times the level of funding per student than normal state schools.

“If a charter school fails and shuts down – the owners and managers can keep the land and state assets. This is

where our education system is headed. It is a seething mass of problems and is changing the social fabric of New Zealand.

“Things have now reached such a crisis point we’re saying it’s time we had an Education conference between all those involved – in early childhood, primary, secondary, tertiary, trade training, adult and community education. Out of this Education conference will come a strategic plan for New Zealand education for the next 30 years.

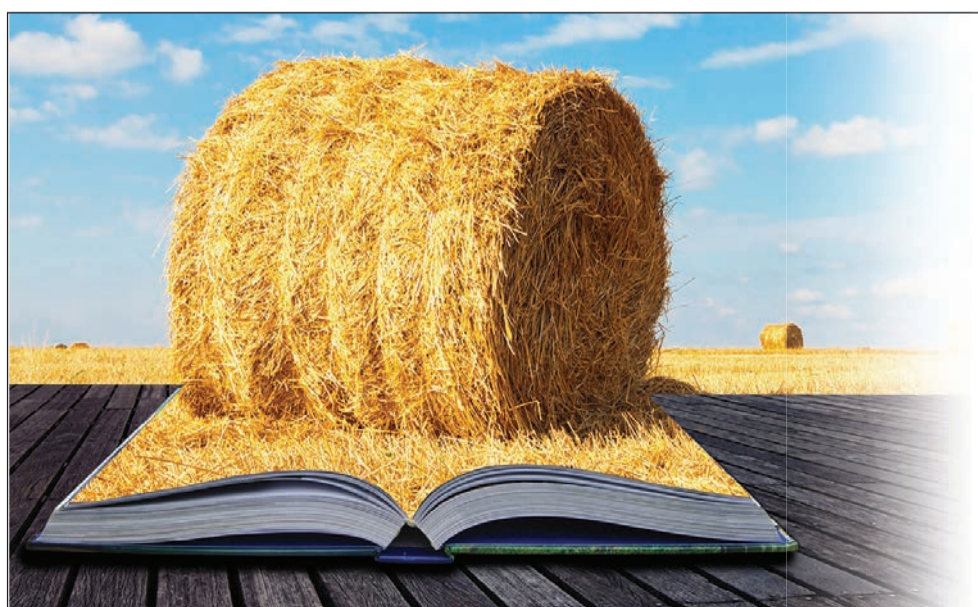
“We need order to triumph over chaos – and it’s needed urgently.”

On this month in history Bob Hawke becomes PM

On March 5, 1983 Bob Hawke, the Labour Party leader, became prime minister of Australia. He was a former leader of the trade union movement as president of their supreme body ACTU. He was elected PM three times in 1984, 1987 and 1990.

He was a Rhodes scholar at Oxford. He held a world record for beer drinking.

Before he had even entered politics opinion polls showed him to be the most preferred person to be prime minister.



Brake & Clutch REBUILDERS

NEW OWNERS

More Than Just Brake Specialists. WE DO IT ALL!

Full Workshop Repairs including Servicing

- WOF Repairs
- ABS Faults & Repairs
- Brake Hose & Power Steering Hose Manufacturing
- Disc, Drum & Flywheel Machining
- Cable Repair & Manufacturing
- Cambelts • Batteries • Towbars
- Trailer Sales, Spare & Repairs
- Courtesy Car Available * Conditions Apply

Harley and Susan Coombe

06 758 5401

Corner Eliot & Molesworth Streets, New Plymouth

A/H Harley 027 536 0885

bcrnp@xtra.co.nz

www.bcrnp.co.nz

Talk to us today!

Opunake and Coastal News is distributed free to every home & business within the rural area, bounded in the north by the New Plymouth city border, extending east to Egmont Village and around to the edge of Stratford, south to Hawera city border and inland to Kaponga & Eltham. We want to be involved with your business. Call today and discuss your marketing options with us.

OPUNAKE & COASTAL NEWS

Agricultural advice by the book

When it comes to legal issues in the farming industry, you'll find the team at RMY Legal speak your language.

T: +64 6 769 8080 | F: +64 6 757 9852 | 0800 733 837
136-138 Powderham St | New Plymouth 4310 | New Zealand
www.rmy.co.nz

Plumbing experience being put to use

Dominic Cooksley-Gruys followed his dreams, and since the middle of last year has had his own plumbing business.

"I bought a van, jumped in the deep end, and we've been going from strength to strength ever since," Dominic said.

In the last eight months Oakura-based Pipe Dreams has been doing jobs all around the mountain. Dominic's CV includes working in the Christchurch rebuild and doing the plumbing at a 343 room hotel in Canada.

Dominic says he specialises in new houses and is fully experienced in all maintenance issues.

"Across all aspects of plumbing, there's nothing we do not do," he says.

If he has a number of jobs pending in a town further afield, he is prepared to try to get them all done on one day, in order to avoid charging individual clients for travelling time.

Dominic grew up around



The team at Pipe Dreams. From left: Dominic, Jos, Amelia and Jurnee.

Oakura and was deputy head boy at Spotswood College. After leaving school he started a plumbing apprenticeship and has been in the plumbing business for the last 10 years.

He went to Christchurch after the earthquake to help out with the rebuild. In his first week there he met Amelia from Waikanae. Her father was in the construction business and

had shifted to Christchurch to help with the rebuild, taking his family with him.

Dominic was in Christchurch for two years.

"It was definitely an eye opener working on the re-

build. It was hard work and labour intensive," Dominic said. It was also a time of education, adapting to changes in the building code.

After Christchurch he and Amelia went to Canada "for the skiing." While there Dominic also worked on the plumbing at a hotel in Banff.

A year on, with Amelia expecting the arrival of their son, Jos, Dominic and Amelia decided to return to New Zealand.

"We were going to do a little bit more travelling, but we thought we'd better buckle down and start a business," said Dominic.

With Amelia looking after the office, Dominic got things underway. At the start of this year, he took on Jurnee Corrigan who is in her third year of a plumbing and gas fitting apprenticeship.

Dominic says he supports women in the plumbing trade.

"There is a huge shortage of plumbers in this country, and girls can do just as good a job as boys," he says.

Jurnee grew up around Opunake, and is a former deputy head girl of Opunake High School. She and Dominic had already known each other through their shared interest in the martial art Shotokan karate, in which both are black belts.

Both have represented New Zealand, Dominic at Senior Men's level and Jurnee at Intermediate Women's level. Both have competed at world cup events, one together in the Phillipines, and Dominic one more in Sydney.

Both have competed at world cup events, one together in the Phillipines, and Dominic one more in Sydney. Both have competed at world cup events, one together in the Phillipines, and Dominic one more in Sydney.

One thing he is particularly interested in is solar hot water, for which he sees potential in Taranaki. Notwithstanding the vagaries of this year's summer, he says evacuator tubes are able to heat water, even on a cloudy day.

Dominic says that as his business expands he looks forward to taking on more staff and bigger jobs.

Taranaki property prices reach new high

Average property prices in Taranaki have reached an all time high according to figures released by realestate.co.nz, the official website of the New Zealand real estate industry.

Taranaki was one of nine out of 19 regions in New Zealand to record an all-time high asking price in January. Prices in Auckland remained static.

The average asking price in Taranaki went up 4.8 per cent to \$387,594.

"Several regions recorded spikes in the average asking price in January, most notably Central Otago/

Lakes, where a 17.6 per cent increase saw the average asking price reach \$888,567.

"While the national average asking price climbed just 1.1 per cent last month, this is still an all-time high of \$624,709. However, the full set of statistics would suggest that seasonality is still in full swing," says realestate.co.nz CEO Brendon Skipper.

Real-time market statistics from realestate.co.nz show that Central Otago/Lakes recorded the biggest average asking price increase, followed by Central North Island at 12 per cent (\$413,392), Hawkes Bay at

10.8 per cent (\$413,405) and Bay of Plenty at 9.8 per cent (\$592,479).

"Wellington is always an interesting market to watch and in January was another region showing an all-time high in terms of asking price at 5.6 per cent (\$556,807). However, it's looking light in terms of listings with only six weeks' worth of inventory, compared to 16 weeks in Auckland," says Brendon.

As well as Taranaki, other upward movers included Manawatu/Wanganui up 4.7 per cent (\$310,437); Otago up 4.6 per cent (\$358,897)

and Coromandel up 2.3 per cent (\$700,352).

"At this point it's too early to tell if this upward spike will be a trend for 2017," says Brendon.

The average asking price in Auckland in January was \$943,002 compared with the previous month at \$949,898.

"In Auckland it's too early to say whether asking prices have been affected by the traditional seasonality, as the asking price remained quite static in January. However, new listings are up 5.5 per cent compared to January 2016. We have

seen another drop in demand in Auckland, down 25.39 per cent, meaning buyers can approach the market with more choice," says Brendon. In terms of inventory around New Zealand, Auckland is sitting at 16 weeks; Taranaki is sitting at 17 weeks; Manawatu/Wanganui is sitting at 13 weeks; Otago at 11 weeks and Coromandel at 35 weeks.

Inventory provides a measure of the rate of turnover in the market, by calculating how long it would take for current property stock to sell out if, theoretically, no new properties were to be listed after today.

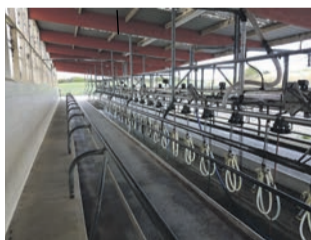
"Next month should give us a clearer indication of trends across all measures," says Brendon.

We welcome your contributions

Please send to editorial@opunakecoastalnews.co.nz

Next Issue due out March 17

TENDER | SUPERB OPPORTUNITY OPUNAKE



920 Ihaia Road, Opunake, South Taranaki

Here it is! 94.6346 ha (233.84 acre) dairy farm in the sought after coastal belt milking 240 cows through a 26 A/S herringbone cowshed with production tracking to 90,000 MS this season.

Largely rectangular in layout with a central race, water sourced from a catchment near the river and fed through a Dosatron to the farm via a 32mm ring pipe system and a separate water pump on farm with a gravity fed system (can be joined with either supplying farm).

Mostly flat in contour with some lahar this farm also makes around 170 bales of supplements annually, farm buildings include two haybarns, two lockable implement sheds, 2 bay Goldpine shed, calf shed and 30 ton PK bin.

A number of titles provide opportunities here, complimenting this property is a 3 bedroom fully insulated and double glazed home with double garaging and sleepout. Rarely do farms of this size and location become available.

Astute first or second farm buyers and/or investors look no further.

Tender Closes

4pm, Wednesday 8 March 2017
at McDonald Real Estate Ltd,
50 Tasman Street, Opunake
(unless sold prior)

Open Days

Thursday 23 February
11:30am-12:00pm

Thursday 2 March
11:30am-12:00pm



Blair Burnett
M 021 190 7728



Peter McDonald
M 027 443 4506



TENDER | OPUNAKE DAIRY / GRAZING / RUNOFF



349 Ihaia Road, Opunake, South Taranaki

Located just minutes from Opunake on the Ihaia Road this superb 63.9403 hectare (157.9964 acre) dairy farm/grazing/runoff block presents opportunities seldom available in today's marketplace.

Currently milking 148 cows through a 12 A/S herringbone cowshed this property has produced 62 - 63,000 over the last two years and is on track to do the same production this season. Largely flat in contour, centrally raced with water supplied via the Opunake Water Scheme this farm presents in top condition.

With two titles (34.4ha and 29.5ha) a great location and a solid infrastructure this farm presents opportunity to a first farm buyer or additional land for a current milking platform.

If you've been looking you've found it, this farm won't last long!

Tender Closes

4pm, Wednesday 8 March 2017
at McDonald Real Estate Ltd,
50 Tasman Street, Opunake
(unless sold prior)

Open Days

Thursday 23 February
1:00pm-1:30pm

Thursday 2 March
1:00pm-1:30pm



Blair Burnett
M 021 190 7728



Rodney Perrett
M 027 241 3979



A holiday home and a spare room

This trail Manor caravan that could double as a spare room when not being used on holiday sleeps 7 and has all the mod cons including a kitchen with a gas stove and oven, a 3-way fridge, a shower – inside and out – and a little toilet.

Tastefully furnished and in immaculate condition, other features include a fixed super king sized bed and a fixed double bed plus a separate sitting area that can be adapted to accommodate extra people. There's lots of living space.

The caravan also has gas heating and a solar panel to run the indoor and outdoor lights when not hooked up to mains power.

The caravan is towed on a single axle



The spacious interior, above and at right.



TRAILER MANOR CARAVAN

A home away from home or a spare room. Sleeps 7, shower, toilet, immaculate.

Coastal Welders 027 255 8677 or 06 752 8138
 email: coastalwelders@xtra.co.nz - Warea

and has electric brakes.

It also comes with a Fiamma grey/black water tank and spare 15" wheels.

With heaps of floor area, and storage it would be great as extra accommodation and is collapsible for a compact, light-

weight tow.

The caravan can be viewed outside Coastal Welders at Warea. Take a look.

Traditional Contemporary



At last an Architect designed home on your site for \$450K* Total cost Move in! *Other Packages from \$350,000

SAUNDERS ARCHITECTS 128 Vivian St, New Plymouth
 Ph 06 759 7430 - info@saundersarchitects.co.nz



From this ...



...To this.



...To this.

\$5,000 fine for motorhome modification

A Tauranga man has been convicted and fined \$5000 for doing gasfitting work without a licence and has been ordered to pay solicitor's costs of \$226.

Jason Ash did not hold a gasfitting licence when he installed a refrigerator, associated gas pipes, connected the gas pipes to the gas supply and installed a ventilation system for the gas appliance in a motorhome.

The hazards associated with the manner in which Mr Ash's gasfitting work had been carried out included creating a substantial risk that the fridge would overheat and fail, which did in fact happen, and creating a risk of a gas leak, in turn creating a risk of a fire or explosion.

The prosecutor in the case, The plumbers, Gasfitters and Drainlayers Board, report that the increasing popularity of motorhomes and campervan travel has seen an upsurge in complaints regarding faults and unanticipated pitfalls from consumers.

"Two issues proving problematic and effectively ending the road for these unsuspecting motorhome enthusiasts have been defective illegal gasfitting work,

and the absence of a Certificate of Compliance", said the Board's Chief Executive, Martin Sawyers.

Restricted gasfitting work conducted by anyone who does not hold a current licence from the Board is illegal, carrying a maximum fine of \$50,000, and can result in invalidation of an insurance policy. "The Board is experiencing an increase in reports where the complainant had simply assumed their motorhome was compliant and gasfitting work had been carried out legally," says Martin.

"What consumers need to know is, a certifying gasfitter must provide a signed gasfitting certificate where restricted work has been carried out in this scenario. Consumers should stay safe and ask for a copy of this at the time of purchase or modifications – it is peace of mind that the gasfitting work has been conducted in a legal capacity," said Martin.

Gasfitting certificates need to be kept in a safe place – as they may be required for insurance purposes or if a motorhome is resold. If you do not have a gasfitting certificate contact Energy Safety (www.energysafety.govt.nz) in the first instance.

If a gas certificate cannot

be located consumers should contact a certifying gasfitter who can issue a certificate of verification for the safety of the existing installation.

Where there is any concern that work may have been

done by someone who is not authorised, or there is concern about the competency of a tradesperson, consumers should notify The Plumbers, Gasfitters and Drainlayers Board.

Do you comply with new cooling regulations?
You CAN!!
 with
THE ICE TANK

- All your pre-cooling issues solved with one solution
- Pre-cooling made simple
- Fits your existing chiller unit (no extra load on your power supply)
- Maintenance Free
- One size fits all
- Utilises cheap night rate electricity
- Extremely cost effective
- Guaranteed to comply
- So simple but it works
- Locally made in Taranaki
- Installed and serviced by the manufacturer.

Call today for an obligation free quote

Sinclair
 Electrical & Refrigeration Ltd

Ph 761 8084
OPUNAKE

sinclairelect@xtra.co.nz
 Okato 752 4084
 Stratford 06 765 4499
 Hawera 274 8084



TOP OF THE LINE ELECTRICITY SERVICES

Call us for fault repairs & powerline renewal at anytime.
 Privately owned customer powerlines inside your boundary. Free quotes.

Greg Lewis: 027 453 0326 or Justin Robinson: 027 445 9162

Americana næs pred ing friendship a rø s the sea

Continued from page 1

being the 10th Americana they wanted to do something special. Last year it was held over three days, this year it's held over four, taking in centres like Stratford and Waitara which haven't been included for the last couple of years. Another change from last year was parking the cars at the beach on their way through Opunake, instead of at the Event Centre. Toni said every Americana has its own uniqueness. "We have a wide variety of cars, from early American to later models, across all brands and everything in between. The beauty of Americana is that it's a celebration of American motor history. She said Americana continues to attract interest from further afield with Australians, and even the occasional American coming here, making friends with other car enthusiasts and continuing to return year after year. Among these are Jim and Chris Ballard from



Serenading the cars into Opunake.

Gippsland, Australia, who are at their seventh Americana. They were there driving a 1932 Model A Ford replica made in 2012, and borrowed from their friend Ash Peters from Inglewood. The car has a 289 V8 engine and 5-speed gearbox acquired from a wrecked Mustang.

"We're honorary kiwis now and we love Americana," Chris said. Jim said their love affair with Americana began when they lived in Stratford, Victoria, and were visiting Stratford, Taranaki for the Stratfords of the World conference. "Some friends took us around the area. We had just

missed Americana but the flags were still up. We asked about this Americana, and the rest is history." There for the first time and closer to home was Erwin Kiser from Eltham with his 1934 Chev Master, which he had only picked up three months before. The car had been registered in Tauranga in 1934, so was an original New Zealand import which has had a few modifications since. "I had always wanted a car in this style. I suddenly found one so I got to grab it quick." Attracting a bit of attention was Mike Tubbs' 1982 Excaltur Phaeton Series 4 1B. "It's never been seen in New Zealand before," said Mike who hails from Ngahinapouri in the Waikato. "I lived in the States in 1979 and I wished I could have owned one. Then I found one for my birthday 18 months ago." So he imported it from Florida. The Excalturs were only made for 24 years, and Mike's one was made towards the end of that period.



In they roll.

Got it Covered
South Taranaki

Canvas work, PVC, Saddlery,
Vehicle Interior restoration, Motorbike seats, Trailer covers, Sunshades, Tonneau covers, Swimming pools and Sandpit covers.

Got it Covered South Taranaki
P. 06 278 8255 - M. 027 508 8958
11 Fitzgerald Lane, RD 13, Hawera
www.gotitcoveredsouthtaranaki.co.nz

ANDREW PURSER
panelbeaters LTD

- Windscreen replacements & repairs
- Chassis Straightening
- Spoiler Kits fitted
- Private repairs
- Rust proofing
- Plastic welding
- Insurance work
- 24 hour towing

Courtesy vehicles available

FREE QUOTES

Ph/Fax (06) 278 8233
22 Cambria Street, Hawera
Mob 027 249 9489
A/Hrs (06) 278 7314
mr.fix@xtra.co.nz

Engine Rebuilders
NEW PLYMOUTH

Engine Reconditioning & Automotive Machining
THE IDEAL COMBINATION FOR REFURBISHING YOUR...

- ✓ classic cars
- ✓ trucks
- ✓ tractors

LUCAS
OIL PRODUCTS INC.

Classic Components
ENGINE PARTS

New Engine Parts for Classic Vehicles

Molesworth Street
06 - 758 5263
06 - 758 5262

TARANAKI'S 4WD CENTRE - QUALITY & SERVICE

COMMUTER \$16,990	ECONOMY \$9,990	LOOKER \$29,990	AS NEW! \$124,990	ALL PURPOSE \$18,990	SMART \$17,990
1994 HIACE GRAND CABIN, 3.0 T/DSL 5Spd, p/s, a/c, elects, 10 seats, superb luxury in bronze	2007 TOYOTA YARIS 5 DOOR NZ new, 1.3, auto, p/s, a/c, elects, airbags, 29kms, charcoal	2012 DODGE NITRO STX 3.7 V6, 4WD, auto, p/s, a/c, airbags, leather, 59kms, alloys, silver	2016 BMW X5 50d MOTORSPORT 7 seater, 4wd/4x4, sunroof, heated windows, alarm, traction control	2005 MITSU TRITON 4WD, GLS SPORT 2.8 l/c, T/Dsl, 5 speed, p/s, elects, a/c, alloys, canopy, green/gold	2006 TOYOTA RAV 4 SPORT 2.4 4WD 5 Door, auto, p/s, a/c, elects, keyless, widebody, alloys, 80kms, light green

Hareb Deken Motors
RMVT TARANAKI'S 4WD CENTRE - VISIT www.harebdekenmotors.co.nz

331 St Aubyn St • New Plymouth Ph (06) 759 9943
FREEPHONE 0800 289 493
A/H Mike Hareb (06) 752 7697 Ton Deken (06) 752 7405

Americana predicting friendship across the sea



They just kept coming.



and coming.



Even Peter Snell got in on the action. Dressed as a highway patrolman and riding a CHPs (California Highway Patrol) Kawasaki bike used by the Los Angeles Police Department was Dennis Stewart from Oakura. This is his third time helping lead the parade, although Dennis says it maybe his last. Although the Kawasaki is usually considered



Australian visitor Jim Ballard and his replica Model A Ford.

on a Japanese bike, this particular one qualified as an American bike as it had been especially made in Lincoln Nebraska for the police.

A TV series called CHPs starring Erik Estrada was a common staple on New Zealand TV back in the 1970s, and Dennis

even had a replica 1970s CHPs helmet with him. Australian visitor Jim Ballard and his replica Model A Ford. The only one in New Zealand. A 1982 Excalibur Phaeton Series 4 1B and proud owner Mike Tubbs. Erwin and Angela Kiser from Eltham and their 1934 Chev Master. CHPs patrolman Dennis Stewart from Oakura. The Sheriff of Opunake. Ian Phillips dresses up for the occasion.

Opunake shows its colours for Americana

Americana rolled into Opunake last week and the town dressed up for the occasion. Opunake's businesses got into the act and decorated themselves in ways that were consistent with the day's American theme.

Earlier this week the prizes were handed out, with Farm Source winning the cup for best dressed window, and Everybodys Theatre finishing second.

Eish Chips'n'More had the best dressed pole, with Corkill Systems finishing second.

The trophy which years ago was regularly awarded in best dressed windows competitions, and has since been kept in the Print Shop came out of storage for the occasion.

Sandy Olliver of Corkill Systems said being on the edge of town, they had



Liz Sinclair, Secretary of the Opunake & Districts Business Association with Janice Burnnand from Farm Source who won Best Dressed Window.

not previously entered competitions like this, but decided they would enter with their Donald Trump and Mexican immigrant-

themed entry. "We thought we could do this, and we had a lot of people come down and have a look."

SHOE & BOOT SALE
by SCARPAS David Deacon
Also
SHOE, BAG & LEATHER REPAIRS
244 Broadway
STRATFORD
Ph (06) 765 5591 - Fax (06) 765 5594

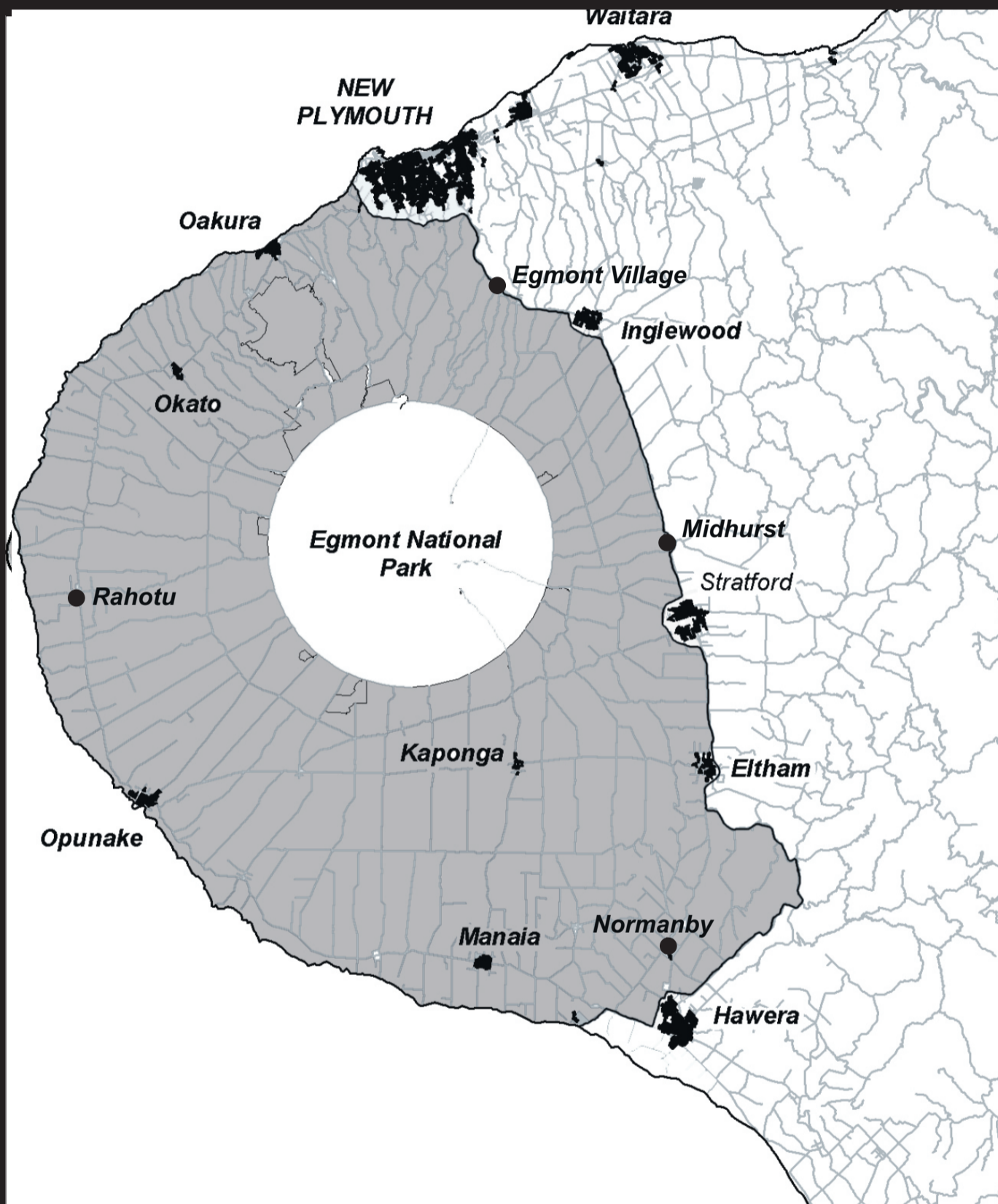
Taranaki Agents for:
ARCHGOLA OUTDOOR SHELTERS
NZ LOUVRES Love your Lifestyle
OTHER PRODUCTS: Ziptrak Blinds | Shade Sails
Umbrellas | Custom Structures
OUT BACK CREATING OUTDOOR SOLUTIONS
COLETTE STANLEY
8 Seaview Road
0800 363 433
info@out-back.co.nz
www.out-back.co.nz

FORKLIFTS | CONSTRUCTION EQUIPMENT

- RENTAL
- SERVICE
- PARTS
- NEW & USED SALES

AGENTS FOR NILFISK FLOORCARE PRODUCTS
AB EQUIPMENT
34 Hurlstone Drive, New Plymouth
Shaun McKay - Sales Specialist
Ph (06) 757 5197 or 0800 30 30 90
www.abequipment.co.nz

WANT TO DO BUSINESS IN OUR AREA? TALK TO US



Opunake and Coastal News is distributed free to every home and business within the rural area, bounded in the north by the New Plymouth city border, extending east to Egmont Village, and around to the edge of Stratford, south to the Hawera city border and inland to Kaponga and through Eltham.

We are an independent newspaper based in Opunake, which is targeting both the towns and rural communities and we aim to have news coverage within all the areas of our distribution.

We want to be involved with your business call today and discuss your marketing options with the team.

**COVERING
THE COAST**

**Promote
your business
or event
in our area
call us on
(06) 761-7016**

**OPUNAKE & COASTAL
NEWS**

• 23 Napier St, Opunake • Ph/Fax 761-7016
• email: ads@opunakecoastalnews.co.nz

Deadlines for new food safety law

The deadline for some businesses to register under the new Food Act is coming up. Food businesses, including restaurants and cafes with an alcohol licence, need to apply by 31 March.

Over 5,000 food businesses across the country are already registered under the new law, which came into effect last year.

Sally Johnston, Manager Food and Beverage at MPI, says the new law aims to improve food safety by moving to a risk-based

approach. "It sets different rules for different businesses depending on what they do, and focuses on what's most important for making sure food is safe."

While new businesses have to comply straight away, existing businesses are changing over to the new rules in stages. Other businesses that need to register by 31 March this year include Early Childhood Education centres that serve food; processors of nuts, seeds or coffee beans; and

manufacturers of food for vulnerable people (like babies or the elderly), ready-to-eat salads, and sauces, spreads, dips or soups that need to be kept cold.

"Local councils and MPI are working with businesses to help them change over to the new rules. We've been holding workshops for food businesses around the country and have published online tools, step-by-step guides and videos on the [MPI website](http://www.mpi.govt.nz).

"Under the new rules,

higher-risk businesses, including restaurants and cafes, need to use a written plan for food safety, called a food control plan. Medium and lower risk businesses will follow a set of food safety rules known as a national programme.

"All registered businesses get checked by a food safety verifier. This is an important part of the system, as it's how we check businesses are making safe food. Those that manage food safety well will be checked less often than those who don't.

"This means that doing things well can help businesses save time and money, as well as giving customers confidence that their food is safe."

Most businesses need to register with their local council. They can find out how the rules apply to them by using a tool called "Where do I fit?" on the MPI website: www.mpi.govt.nz/foodact



OPPORTUNITY KNOCKS

4036 South Road, Opunake

This 4.5 hectare lifestyle property is currently set up for horses with a massive stable, this could be a workshop or perfect for a car enthusiast - the options are endless.

The house offers three bedrooms plus a large office or 4th bedroom, central gas heating makes for a cosy home on those cooler days. A fabulous deck off the dining room allows for relaxing entertaining in the afternoon sun.

Just so much on offer here, it really needs to be seen.

Tender closes 1.00pm, Wednesday 29 March 2017 at McDonald Real Estate, 50 Tasman Street, Opunake (unless sold prior)

Open Home
Sunday 5th March
1:00pm-1:30pm

Contact
Viv Scott
O 06 761 7321
M 027 441 4596

View on eieio.co.nz
#OPL00728



Vitamin D supplements can help children

New Zealand children can benefit from Vitamin D supplements that protect against acute respiratory infections, according to a new study.

The study published in the British Medical Journal, combined information from 25 clinical trials of vitamin D supplementation performed in 14 different countries including two studies conducted in New Zealand.

Across this entire age range and irrespective of the person's vitamin D status when they joined each study, vitamin D supplements were shown to be safe and to have a modest beneficial effect in preventing acute respiratory infections.

The study combined information about more than

11,000 people aged 0-95 years who were participants in these studies with vitamin D provided in the different studies from as short a time as seven weeks to as long a time as 18 months. The beneficial effect of vitamin D was larger for people with vitamin D deficiency.

How the vitamin D supplement was given also influenced whether or not it was beneficial. If vitamin D was given as a daily or weekly dose then it was helpful, but if given as larger doses less frequently then it did not prevent acute respiratory infections.

"These findings have important implications for New Zealand where both vitamin D deficiency and acute respiratory infections are common", says study

co-author, University of Auckland Head of Paediatrics and Starship Paediatrician, Professor Cameron Grant.

"Both of these health problems are particular issues in young children, especially those of non-European ethnicity," he says. "Pneumonia hospitalisation rates in preschool children are several times higher in Pacific and Māori children than they are in European children," he says.

A new study funded by Cure Kids and being conducted by the University of Auckland at Starship Children's Hospital is seeking to determine if vitamin D supplementation can prevent children from having repeated hospital admission with acute respiratory infections.



OPUNAKE - We are pumping!

"Since the opening of our new premises, Lorna, Tara and I have been busy marketing Opunake. The support of our local community has been overwhelming and we welcome you to come and see us, next to the Sugar Juice Cafe, for all your real estate needs."

Viv Scott

Property Consultant AREINZ

M 027 441 4596

O (06) 761 7321 | F (06) 761 7320

E viv.scott@eieio.co.nz



TRUSTED IN TARANAKI SINCE 1912

Offices in Hawera, Eltham, Stratford, Opunake, Inglewood, Waitara, New Plymouth & Oakura



TENDER | MINUTES FROM MANAIA!



Normanby Road, Manaia, South Taranaki

Only minutes from the Manaia township on the Normanby Road is this lovely 7.6890 hectares (18.9995 acres) cropping/grazing runoff block.

This long and narrow block would be ideal for growing maize as it is virtually all dead flat. Currently leased to a neighbouring dairy farmer this property should graze approx. 40 dairy heifers May - May.

With water supplied from the reliable Waimate West Water Scheme plus a set of yards and loading ramp this well located property could be just what you are after!

With an abundance of Private Lease land on the boundary and in the surrounding area this purchase could be a strategic move for your future growth!



Tender Closes
4pm, Wednesday 29 March 2017
at McDonald Real Estate Ltd,
Cnr High & Wilson Street, Hawera
(unless sold prior)

Open Days
Wednesday 8 March
11:00am-11:30am

Wednesday 15 March
11:00am-11:30am

Wednesday 22 March
11:00am-11:30am

TENDER | SOLID RAHOTU OPPORTUNITY



153 Tipoka Road, Rahotu, South Taranaki

Located on the Tipoka Road minutes from Rahotu is this attractive 61.11 hectare (150.0154 acre) dairy farm/runoff is milking 180 cows through a very tidy 16 A/S herringbone cowshed. This property has produced 65,600 milksolids average over the last three seasons and has produced 74,000 MS in the past. Rectangular in layout, centrally raced to 35 paddocks and watered via a dosatron through a ring mains system to two drinking points in each paddock this farm is a dream to manage.

Being a great location with solid infrastructure this farm would appeal to first farm buyers or those wishing to expand their current dairy platform.

Largely flat in contour with some lahar, ample shedding and two haybarns this property is complimented with a Brick four bedroom Beazley home and large garage workshop (9 x 6 m). Be quick to capitalise on this rare opportunity.



Tender Closes
4pm, Thursday 23 March 2017
at McDonald Real Estate Ltd,
50 Tasman Street, Opunake
(unless sold prior)

Viewing
By Appointment Only

Brush off the clippers for Shave for a Cure

Shave for a Cure week is fast approaching with Kiwis across the country signing up to lose their locks during the week March 20-26.

The fundraising campaign for Leukaemia and Blood Cancer New Zealand (LBC) enters its 15th year and is aiming to raise over \$1

million to support Kiwis living with blood cancer.

When Shelley Woodney was celebrating her birthday in early 2015, a sore mouth and gums meant she couldn't enjoy her food and she headed to bed feeling unwell.

After two days in bed,

Shelley ended up in hospital. "The haematologist told me I had acute lymphoblastic leukaemia. I started treatment right away and didn't leave the hospital for the next 10 days," Shelley said.

Shelley spent 12 weeks having chemotherapy and blood transfusion which she says started out well although she had time in and out of hospital.

Once she finished her treatment, Shelley was given the choice to have a stem cell transplant.

Just eight days after her transplant, Shelley was so unwell in the Intensive Care Unit that the doctor advised her to bring her children in to see her.

"It was the middle of the night and I said we wouldn't call them until the morning because I just wasn't going to die and that was that!" said Shelley.

Although she knew the odds of coming out of ICU were slim, Shelley was determined to recover which



Brush off the clippers.

she has and was given the news that she was now in remission.

Every day six children and adults are diagnosed with a blood cancer like leukaemia, lymphoma, myeloma or a related blood condition and latest Ministry of Health data estimates that close to 21,000 Kiwis are living with blood cancer.

Leukaemia and Blood Cancer New Zealand CEO Pru Etcheverry says, "we are incredibly appreciative of every brave person who has signed up to Shave for a Cure over the years and to those who have taken up the challenge so far this year. Of course we are equally grateful to the family, friends, colleagues and

communities of these people who donate so generously in support of these Shavees".

The funds raised will help Leukaemia and Blood Cancer New Zealand, which receives no Government funding, to support and advocate for patients and families living with blood cancers and blood conditions.

The organisation also provides education programmes, information, raises awareness and funds research into better treatments and potential cures.

On March 17 from 12pm to 2pm, New Zealand celebrities will band together to show their support at Farmers flagship CBD store Shave for a Cure launch event.

Farmers are hugely valued long-term supporters of both Shave for a Cure and Leukaemia and Blood Cancer New Zealand.

Throughout Shave for a Cure Week there are shave events organised at selected Farmers stores right across the country, where members of the public can come together and Shave as individuals or as teams.

Every day six children and adults in New Zealand are diagnosed with a blood cancer like leukaemia, lymphoma, myeloma or a related blood condition. Based on Ministry of Health data, Leukaemia and Blood Cancer New Zealand estimate that close to 21,000 people are living with a blood cancer.

Blood cancers combined (leukaemia, lymphoma and myeloma) are the fifth most common form of cancer in New Zealand

Leukaemia is the most common childhood cancer, while lymphoma is the one of most common cancers in 15 - 24 year-olds.

The cause of blood cancers is unknown.

These diseases can strike anyone, of any age, at any time, without warning.

You can **rely on us** for your **energy needs**

Transform your home - all your hot water, space heating and cooking needs from your trusted local Rockgas supplier.

Count on us - reliable delivery of 45kg LPG cylinders to your home, business, or farm where ever you live.

Locally operated and proud to be part of your community

contact Your local **rockgas** supplier

www.rockgastaranaki.co.nz

Call Rockgas Taranaki
0800 LPG 2 YOU or 06 757 9264

Woodward's FIREWOOD

If you want dry firewood next winter

PH: 06 755 2047
www.woodwardsfirewood.co.nz

- * Animal bedding
- * Coloured Garden mulch
- * Coal 25kg Bags
- * Pine block off cuts
- * Split Pine
- * Split Gum
- * Split Mac

124 De Havilland Drive - Bell Block



Shelley Woodney.

Varivac Controller for vacuum systems

LOWER CELL COUNT! REDUCE POWER COSTS!

- Proven to reduce SCC
- Easily installed between milkings
- Up to 40% power saving across shed

The only system designed specifically to retrofit to all vacuum pump types including water ring.

Contact us
0800 10 7006

Specialists in Dairy Automation Solutions
www.corkillsystems.co.nz



Climate change actions should be practical, research-based

Federated Farmers supports the need for action to address climate change but says New Zealand's responses should be practical, cost-effective and based on sound research.

Delegates representing 24 branches around the nation have unanimously passed a 12-point Federated Farmers Policy on Climate Change.

"The scientific consensus is that climate change is happening and that humanity, including agriculture, contributes," the policy states.

The 13,000-member farmer group called for greater investment in research efforts to reduce biological agricultural emissions. It was worth accessing all the tools of modern biology, including biotechnology, but the measures should be cost-effective and not



Anders Crofoot, Federated Farmers vice-president and Climate Change portfolio leader.

at the expense of farm productivity.

The Paris agreement also gives priority to food security and production, recognising the dual challenge of controlling global temperatures and feeding a growing population.

"New Zealand farmers are world-leading carbon efficient protein producers so it makes no sense to include our agricultural biological emissions in the Emissions Trading Scheme until there are effective mitigation tools, and our international competitors are likewise included.

"We would otherwise simply be exporting production to other less efficient players, making the global environmental problem worse, not better," Federated Farmers climate

change portfolio leader Anders Crofoot says.

Federated Farmers sees benefits from managing the cross-over between climate change and other policy issues. For example, research into better understanding the nitrogen cycle could lead to reductions in nitrous oxide emissions as well as the nitrate leaching that affects waterways.

Soil erosion control

plantings in hill country and riparian planting will sequester emissions, reduce sedimentation and phosphate in streams and rivers, and also achieve biodiversity objectives.

"Farming must remain viable and that requires exploring the implications of the threats and opportunities arising from a changing climate," Mr Crofoot says.

Busy summer for MPI biosecurity staff

Faced with record numbers of international visitors this summer, Ministry for Primary Industries biosecurity staff have intercepted risk goods ranging from the bizarre to the potentially devastating for New Zealand's economy and environment.

Some of the unusual airport interceptions so far this summer include: a chilly bin of live spanner crabs from Thailand presented to officers at Wellington Airport, fruit fly larvae in mangos found at Auckland Airport inside a suitcase from Malaysia jammed

full of plant produce and other food, freshwater fish from Thailand found crawling with maggots at Auckland Airport, two brown marmorated stink bugs found during a search of a tent used by a traveller arriving at Auckland Airport from the United States, and untreated spring water from Fiji believed to have healing properties. Known as miracle water, travellers have to pay for heat treatment if they want to bring the product into New Zealand.

MPI screened 684,407 air passengers for biosecurity risk in January, an increase

of more than 10 per cent (64,121) from January 2016.

It intercepted some 12,600 biosecurity risk items in January. Of these, 1,829 were undeclared.

"The interceptions show New Zealand's biosecurity system is holding up well in the face of huge numbers of arriving passengers, many of whom have little knowledge of biosecurity," says Craig Hughes, MPI's Manager North Passenger and Mail.

"We did a lot of work last year to gear up for the busy summer, including employing nearly 30 new quarantine officers.

"Most of the new staff have been working on the search benches at Auckland Airport to check the baggage of passengers identified as high risk.

"We've also introduced more staff to make biosecurity risk assessments of passengers at the airport. This, coupled with recent layout changes and a new x-ray machine for screening baggage, has allowed speedier processing and improved biosecurity."

Kaponga WI hold AGM

Pihama Lavender Farm was the venue for Kaponga WI's first meeting for 2017.

Hostess Margaret Broomhall had asked members to bring early photos of themselves in a class or sports photo. These were displayed for members to guess who everyone was, which created a lot of fun.

The thought for the month was : Cats average 16 or more hours a day sleeping (I want to be a cat).

Liz Sinclair, the owner of the Lavender Farm made everyone very welcome and spoke of the history of the old dairy factory, and how she came to buy it and make her home there. She showed the members the

still and explained about extracting oil from the lavender. Everyone then walked around the garden and viewed the beautiful lavender in full bloom.

The AGM took place after lunch with much discussion about the Kaponga Library, the cemetery and the freedom campers. A letter is to be sent to Council about the members' concerns.

Members were reminded about the Founders Day event at Hollards Gardens on February 21.

At the conclusion of the meeting members took advantage of looking and buying at Liz's interesting shop.

The following Officers

were re-elected: President: Dorothy Hughes. Secretary: Gillian Frandsen. Treasurer: Sharyn Hurley. Vice President: Jo Jones. Competition Steward: Joy Eliason. Scrapbook Convenor: Margaret Broomhall. Publicity Officer: Fiona Collins. Secret Friend Convenor: Diane West.

Competition results: Overall winner for 2016, Jubilee Cup Joy Eliason. Runner-up: Morrisey Cup, Diane West. Winner Handcraft: Joy Eliason Cup, Joy Eliason. Winner Miscellaneous competition: Gillian Frandsen.

TARANAKI OWNED & OPERATED

All curtains made on site in our New Plymouth Shop



For free measure & quote **Jane or Emma** will come and see you. FREE polycotton lining on orders made in March!

Support your local Taranaki business
Weekly round the Mountain Service!





HOMEMAKER

Curtains - Blinds - Soft Furnishings
Free measure & quote Taranaki wide!
Round the Mountain Service

NEW PLYMOUTH
PH 06 757 5532
300 Devon St East,
Northgate Court
NEW PLYMOUTH



Paul Stanton - Tony Coombes
Your local reps from your local company

Ag Traction Taranaki
Waiwakaiho

Paul 027 440 3074 - Tony 027 243 7910
www.agtraction.co.nz - admin@agtraction.co.nz

Services provided to the Farming Industry

- Fresh Water Delivery's
- Septic Tank Cleaning
- Drain Cleaning
- CCTV (Drain and Pipe Inspection)
- Hydro Excavation/Hydro Demolition
- Abrasive Blasting and Coating





INTERGROUP

South Taranaki Branch
25 Wallscourt Place, Normanby
Ph: 06 272 8725 | Fax: 06 272 8724

New Plymouth Branch
28 Hudson Road, Bell Block, New Plymouth
Ph: 06 755 9150 | Fax: 06 755 1611



SCOOTERMAN & BOBBY



MOBILITY SCOOTERS,
ACCESSORIES, FLAGS,
BATTERIES, TYRES, TUBES
SCOOTER PARTS,
HIGH VISIBILITY VESTS,
POWERCHAIRS and LIFT CHAIRS,
WHEELCHAIRS and WALKERS,
CRUTCHES, CANES
CANE TIPS + STRAPS,
REACHERS,
SHOWER CHAIRS + STOOLS, TOILET AIDS,
LIVING AIDS, BATHROOM AIDS,
PEDAL EXERCISERS,
LONG SHOE HORNS,
SWIVEL CUSHIONS and more

View On Line or Brochures can be posted
Free Delivery North Island
FITZROY VILLAGE
769 9061 or 0800 929341
www.scootermandbobby.co.nz

We welcome your contributions
Please send to
editorial@opunakecoastalnews.co.nz

Will NZ's energy be clean?

Approximately 80 per cent of New Zealand's electricity comes from renewable energy sources. But is this the full picture behind NZ's clean and green reputation?

The University of Otago's Centre for Sustainability released ten policy briefs from its Energy Cultures research, covering topics such as transport, housing and eco-innovation. The Centre's director, Dr Janet Stephenson, said while about 80 per cent of electricity was generated from renewable energies - hydro, geothermal and wind especially - only about 40 per cent of total energy used in New Zealand came from renewable sources. "We tend to conveniently forget this when we talk about how clean and green NZ is, and just focus on the electricity story," she said.



Approximately 80% of New Zealand's electricity comes from renewable energy sources.

Massey University professor of sustainable energy Ralph Sims said greenhouse gas emissions continue to trend upward especially in transport.

"To reach a major tipping point of emissions reductions requires behavioural change linked with low-carbon technologies - but there is no leadership to drive that change and therefore no signs that the government wishes to significantly reduce our emissions," Prof Sims said. "New Zealand has an opportunity to be a leader in the international aim,

from Paris, to stay below a 2oC temperature rise, but is has dropped the ball." Massey University professor of construction Robyn Phipps said New Zealand's construction industry lagged behind much of the world with regard to energy efficiency. "Our insulation standards are lower than many countries with even warmer climate. The amount of PV panels installed is less than countries, such as Germany, which have low sunshine hours." Prof Phipps suggested

one of the main hurdles is that "many people regard going anywhere above the requirements stipulated in the Building Code as frivolous." "The Building Code is only the lowest legally acceptable solution, it is not the best solution. In the car industry, producers have done a far better job of educating the public that safety features above and beyond the basic requirements to pass a WOF are advantageous and desirable," she said. "The construction industry needs to be getting a similar message out to the public."

Precision Helicopters Ltd

Precise in nature, action and performance

Free Phone: 0800 246 359



Contact PHL for facial eczema spraying!

sales@precisionhelicopters.com
www.precisionhelicopters.com

Sandford Bros Ltd & Spreading Sandford Ltd

Phone Auroa - 06 274 5852
2118 Skeet Road, Hawera
Toll Free 0508 726 336



Sandford Livestock Ltd
Phone Hawera - 06 278 0045
189 Fairfield Road, Hawera
Phone Waitara - 06 754 8069
101 Mould Street, Waitara
Toll Free 0800 707 404

We deliver for ALL suppliers of PKE



No **GIMMICKS**
JUST GREAT PRICING

DELIVERING PKE TO THE COAST FOR OVER TEN YEARS

CALL US NOW FOR COMPETITIVE PRICING

Rural & General Cartage
Specialising in:
* Palm Kernel
* Aggregate
* Fertiliser
* Bale Cartage

Livestock Cartage
Depots in:
* Okato
* Hawera
* Auroa
* Waitara

Ready Mix Concrete
Depots in:
* Hawera
* Wiremu

Ground Spreading
* Spreadmark Certified
* 4WD Trucks
* GPS Proof of Placement



TRC signals small rates rise

The Taranaki Regional Council has adopted a Draft Annual Plan that

foreshadows a 1 per cent rise in general rates for the 2017-2018 financial year.

The Plan will be open for public submissions from mid March, with a finalised version to be formally adopted in May before taking effect from July 1.

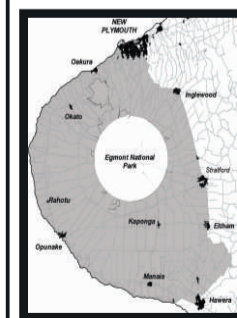
The Council chairman, David MacLeod, says the Draft Annual Plan is largely in line with the 10-year Plan that was widely consulted on two years ago.

"There are changes to three programmes involving predator control, flood protection for Opunake and the revamp of Pukeiti," he says. "These three matters will be the focus of the public consultation starting in mid-March."

However, their financial implications are relatively minor. "They've altered the general rates calculation by half a percent," says Mr MacLeod.

WANT TO DO BUSINESS IN OUR AREA?

Talk to us today!



Opunake and Coastal News is distributed free to every home & business within the rural area, bounded in the north by the New Plymouth city border, extending east to Egmont Village and around to the edge of Stratford, south to Hawera city border and inland to Kaponga & Eltham. We want to be involved with your business. Call today and discuss your marketing options with us.



OPUNAKE & COASTAL NEWS

Promote your business or event in our area, call us on:

Ph/Fax: 06 761 7016 - 23 Napier Street, Opunake or e-mail us: ads@opunakecoastalnews.co.nz

Local MPs delighted to see Taranaki continue to reap the benefits of tourism growth

Local MPs Hon Chester Borrows, Barbara Kuriger, and Jonathan Young welcome the growth of tourism spending in the Taranaki region.

“We have seen an increase in spending for the year to January 2017 of five per cent in Taranaki. That’s a total of \$338 million,” Jonathan Young says.

MP for Whanganui Hon Chester Borrows commented, “across New

Zealand, tourists spent more than \$26 billion in the year to January 2017. Communities around New Zealand continue to benefit from increasing tourism and higher spending. This is great news for Taranaki and all New Zealanders.”

Domestic and international tourism creates immense value for working New Zealanders, with tourism employing over 180,000 people in 2016.

“The employment opportunities and economic prosperity as a result of this growth in tourism is significant,” said Borrows.

“What is really great for this region is the steep increase in free and independent travellers for whom the likes of our museums, collections, galleries and studios are just ideal. These people are travelling in a rental car or motor home and have the

time to really appreciate our attractions,” said Borrows.

MP for New Plymouth Jonathan Young said, “we still have massive opportunities before us, as even though Taranaki has a strong attraction for domestic visitors, we’re only seeing two per cent of the 3.5 million international visitors come to our region.”

“Generally they spend more, so it’s important for Taranaki event organisations and businesses to keep generating reasons why coming to Taranaki needs to be high on their list. I’m thrilled to see that the Pouakai Crossing on Mt Taranaki is becoming increasingly recognised, as is the Len Lye Centre,” said Young.

MP for Taranaki-King Country Barbara Kuriger commented, “as international visitor spending is booming, we must also invest to sustain and support this. The Government is investing in infrastructure across the board to support our visitors, including the phase two rollout of Ultrafast Broadband and a significant investment in regional roading.”

“The \$3.9 million rollout of UFB to regional towns in Taranaki will increase

visitor numbers and enrich their visit to our region.

They will be able to access tourism information in the palm of their hand, no matter where they are. It also means our international visitors are able to Facebook and Tweet about their adventures, increasing the visitor potential for the region,” said Kuriger.

“With a \$187 million investment in Taranaki’s transport infrastructure during the 2015 – 2018 National Land Transport Programme, we are seeing the Government’s commitment to inter-

regional connectivity, public transport, and route resilience. Improved roading is significant for growth in tourism,” said Kuriger.

“Rated as Lonely Planet’s second best region in the world to visit, lets maximise the opportunities coming our way. While it’s great to see growth, let’s not be satisfied with just that,” said Young.

“Increasing numbers of tourists of so many different nationalities is proof that New Zealand offers a world class experience for its visitors, from near and far,”

Pahiatua insect man fined for illegally possessing

A Pahiatua insect expert has paid a hefty price for possessing illegally obtained exotic moth eggs, hatching them and redistributing eggs to three other people around the country.

Twenty-eight-year-old entomologist, Zachary Paul Warren, was fined \$11,250 when he appeared for sentencing in the Palmerston North District Court yesterday over two charges under the Biosecurity Act.

Mr Warren pleaded guilty to the charges late last year after his offending was detected by MPI biosecurity officers.

Ministry for Primary Industries Team Manager Compliance Investigations, Steve Ham, says Mr Warren told officers, “I’ll be honest, you’re going to find something” as soon as they knocked on his front door in June last year.

“He then led biosecurity officers to a window where he had thrown out a branch containing four large caterpillars and bowls that contained live caterpillars on leaves,” says Mr Ham.

“A total of 37 live caterpillars and 41 dead moths were found. The dead moths were wrapped in paper triangle envelopes in a box in what Mr Warren called the ‘butterfly room’

and were ready to be posted out to be used in displays.

“All of the moths found at the house are unauthorised under the Biosecurity Act 1993 and are considered to be new organisms under the Hazardous Substances and New Organisms Act (HSNO).”

Mr Ham says Mr Warren was sent between 20 and 30 Malaysian Moon Moth eggs late last year in a small plastic tube inside a greeting card by a friend who lives in New Caledonia.

He said he sensed it was wrong and that he shouldn’t have them but his excitement at receiving them and the opportunity to raise them “drowned out” any thoughts of reporting the eggs and handing them over to MPI.

In sentencing, Judge Lance Rowe said that if the moths had posed a greater risk to New Zealand’s ecosystem, or if they had been dealt with for a profit, the likely sentence would have been imprisonment.

He then invited Mr Warren to tell those interested in entomology what had happened in court and said there was no room to introduce unauthorised species into New Zealand.

“This sentence reflects the high risk consequences for New Zealand if organisms such as this became established,” says Mr Ham.

“Mr Warren’s blatant disregard for biosecurity could place a lot of New Zealand industries in jeopardy.

“Due to the tropical nature of the species of moth they would not have become established here in New Zealand however there is always the risk that associated organisms and pathogens that can live on the moths could be introduced.

“A more detrimental effect on New Zealand’s ecosystem could occur if a different species were introduced from a more temperate climate similar to that of New Zealand.”



OPUNAKE & COASTAL NEWS
LIKE ONE OF OUR PHOTOS?
 Did you know that photos that are published in our paper are available to purchase?
Call in and see us today.

The Cottage

Rest Home - Opunake



Offering Service to our Community by qualified, caring staff.

- * Permanent Rooms * Respite Care
- * Day Care * Meals on Wheels

**Enquiries welcome at The Cottage,
 1 Layard Street, or Phone 761 8009**

SEND US YOUR SPORTS STORIES AND PHOTOS!



OPUNAKE & COASTAL NEWS

Promote your business or event in our area, call us on:

Ph/Fax: 06 761 7016 - 23 Napier Street, Opunake
 or e-mail us: ads@opunakecoastalnews.co.nz

FARM HEDGES - HOUSE HEDGES - RACE SWEEPER

Operating two machines with
 30 years combined experience

Taking bookings now - contact Rhys aka Mo

027 428 1884



MR Collins LTD
HEDGE CUTTING


CRAWFORD

AGRITECH Ltd


- TRACTOR & MACHINERY SERVICE & REPAIRS
- ON FARM SERVICING
- AIR CONDITIONING SERVICE, REPAIRS AND HOSE MAKING
- SPARE PARTS & FARM OILS
- IMPLEMENTS & ATTACHMENTS - SALES AND SERVICE
- FACTORY TRAINED TECHNICIAN
- TARANAKI & WANGANUI INDEPENDENT FERGIE TRACTOR SPECIALISTS

Ph 06 762 8023
 Ian Crawford
 Mob 0272 207 701

MASSEY FERGUSON | FORD | SAME | LANDINI | ISEKI | VALTRA | MATBRO
 INTERNATIONAL | MERLO | DAVID BROWN | RENAULT | URSUS | JOHN DEERE



MORRIS LUBRICANTS
 the winning formula since 1869



SCAN WHILE YOU MILK

Rotary & Herringbone - 13 years experience
Date late calves - Only \$2/cow

Ph: PETER & LINDA COLLINS
06 762 7820 - Txt 027 716 1501

NZ FARMERS LIVESTOCK

**Bulls, Boners and
Store Cattle
making top money**

Contact

Tim Hurley - 027 445 1167
Bryan Goodin - 027 531 8511

NZ FARMERS LIVESTOCK

**For all your
Livestock requirements
Servicing the Coast**

Contact

Tim Hurley - 027 445 1167
Bryan Goodin - 027 531 8511



Consultant Joe Clough speaking at the Waimate West Demonstration Farm.

Research merger should be good for Taranaki

The Waimate West Demonstration Farm looks set to be part of what could be the world's biggest dairy research platform.

The amalgamation of the Waimate and Stratford Demonstration farms with the Taranaki Agricultural Research Station and a fourth farm near Whareroa into Dairy Trust Taranaki will bring in well over a thousand cows into the research platform.

"This is incredible for

Taranaki and should be great for the region," Dairy Trust Taranaki trustee Duncan Johnston said at the Waimate West Demonstration Farm Field Day held on February 15.

"The Stratford and Waimate West farms have been going for a hundred years, so it made sense to merge the three entities together."

Duncan, who farms at Waverley said there had been an earlier attempt to bring about a merger 10 years ago.

The Field Day was one of two held every year at the 34ha Waimate West Demonstration Farm. The demonstration farm was first set up by local farmers in 1917 and is now home to the Manaia Campus of the Taratahi Agricultural Training Centre who have the farm's management contract.

Consultant Joe Clough said future plans include looking at the viability of autumn calving.

Speakers at the Field Day included representatives from DairyNZ, the Federation for Arable Research, scientists, consultants and local veterinarian and technical specialists.

One of the themes of the Field Day was investigating whether cropping on

the dairy platform is a viable option to increase productivity. The day began at the MJ and C Powell Family Trust farm on the Glover Road near Hawera, where a 278-cow mainly Friesian herd is milked on 88ha. Production last year was 146,000kgMS. Nineteen per cent of the milking platform is in crop.

Michelle Taylor of DairyNZ said that despite times of low pay out, the farm had developed into a business that had "rolled with the punches."

Martin Powell said there had been cropping on the farm for the last 20 years. As well as maize, he has a summer crop "to fill in the gaps," and kale for winter crop.

"With the kale I had started small to see how it works. Now it's pretty much bang on," he said.

He had started putting in summer crops 6-7 years ago. In previous years he has grown both lucerne and chicory. This year his summer crop is "straight lucerne," which Martin says is resilient in drought conditions.

"It's high in product, high in energy and the cows absolutely love it."

Kim Sharpe of Pioneer Seeds said there had been an upsurge of interest in lucerne, particularly in

places like Opunake and Coastal Taranaki where it had not been widely used before.

"It all probably happened in this last year," she said. "One of the contractors tried it on the sandy soils around Opunake and was very excited with the results."

The cropping theme continued when the focus of the Field Day moved to the Waimate Demonstration Farm on Normanby Road, which is in its fourth year of having 25 per cent of the milking platform in crop. Seven paddocks are in maize and three in chicory. Joe Clough said they had tried many crops over the years, and found chicory to be easy to feed and easily digestible.

Among other issues discussed it was noted that although unusual weather conditions this summer have been good for grass, a lack of sunlight has meant maize has been 2-3 weeks behind what it would be expected to be.

Taranaki Vet Group CEO Steve Hopkinson warned against recent weather leading to complacency when it comes to facial eczema.

"Our average spore count at 25 sites is as it was on the same week last year, so we're way out of the woods for saying there's no eczema this year."

SINCLAIR

* Beef * Sheep * Pigs

FARM KILL AND PROCESSING

Prices: Kill Fee \$90 including Offal Removal
\$1.10 processing + GST

Call Colin or Bridgitte - 06 765 4460 • 0274 629 282
121 Cordelia Street, Stratford



FARM SHEDS

BUILDLINK KITSET SHEDS

VALUE SHEDS



SPECIAL 2 BAY KITSET SHED

WAS \$5407⁰⁰
NOW ONLY \$4125⁰⁰ +GST

Various sizes and options See www.buildlinkbuildings.co.nz for details

See us for the **RIGHT PRICE** and **EXPERT ADVICE**

NEW PLYMOUTH
1 Katere Rd. Ph 759 7435
INGLEWOOD James St.
FREEPHONE 0800 245 535
www.valuebuilding.co.nz

VALUE

BUILDING SUPPLIES

BuildLink
Buy Better Build Better



Top quality custom built sheds to your specs

FREE ON SITE MEASURE AND QUOTE

WANT TO DO BUSINESS IN OUR AREA?



Opunake and Coastal News is distributed free to every home & business within the rural area, bounded in the north by the New Plymouth city border, extending east to Egmont Village and around to the edge of Stratford, south to Hawera city border and inland to Kaponga & Eltham. We want to be involved with your business. Call today and discuss your marketing options with us.

Find us on <http://businessimpressions.com/opunakeandcoastalnews>



OPUNAKE & COASTAL NEWS

Promote your business or event in our area, call us on:
Ph/Fax: 06 761 7016 - 23 Napier Street, Opunake
or e-mail us: ads@opunakecoastalnews.co.nz

Talk to us today!

Let's get wild for Taranaki

Taranaki people and organisations doing their bit for Mother Nature can put their hands up for assistance from a dedicated fund.

Wild for Taranaki is calling for applications for grants from its \$40,000 Community Biodiversity Fund. It's open to private landowners, community groups and organisations, and applications close at the end of April.

The funding can go towards a range of activities that protect and enhance Taranaki's indigenous biodiversity: control of predators and/or pest plants, restoration planting, fencing, environmental education, or surveying and monitoring native plants or animals.

Up to 50 per cent of the cost of a project can be funded, to a maximum of \$10,000.

"We know a lot of great work is occurring and Wild for Taranaki wish to get



Leicester Cooper of the Patea Planting Trust says the group's project has greatly benefited from the 'amazing support' from Wild for Taranaki.

alongside our community and show their support," says Mike Weren, chair of the Taranaki Biodiversity

Trust – the organisation behind Wild for Taranaki.

Leicester Cooper, of the Patea Planting Trust, can

vouch for the usefulness of Community Biodiversity Fund grants, having been a recipient in previous years.

"Our Patea River walkway replanting project has greatly benefited from the amazing support that we

have received from Wild for Taranaki," he says.

"It's particularly motivating because it represents an endorsement of our work by our regional peers. This support has enabled the community to begin the task of improving the environment in a type of ecosystem which is regionally and nationally rare."

Application forms for this year's funding round are available from www.wildfortaranaki.nz or the Regional Biodiversity Co-ordinator Leigh Honnor. Email contact@wildfortaranaki.nz or call 0800 736 222. The deadline for applications is April 30.

Wild for Taranaki is an alliance of more than 33 agencies and organisations involved in biodiversity protection and enhancement in the region. The Taranaki Regional Council is a core funder.

Report finds New Zealand loses billions to trade barriers each year

Trade barriers cost New Zealand billions of dollars annually, according to an NZIER report for the Dairy Companies Association of New Zealand (DCANZ).

The report, titled *Dairy trade's economic contribution to New Zealand*, highlights the strong contribution the dairy sector has continued to make to New Zealand's national and regional economic development, even while it has been at the bottom of a price cycle, and despite global dairy markets remaining highly distorted.

"Trade barriers are a significant cost to New Zealand. Tariffs alone are suppressing the value of our dairy products by around 1.3 billion dollars annually," says DCANZ chairman Malcolm Bailey.

"On top of this, non-tariff measures add over \$3 billion in costs to New Zealand dairy exports in the APEC

region alone," he adds.

The report found dairy exports generate more than one in every four dollars earned by New Zealand and the sector provides incomes for 40,000 New Zealanders, including 2,100 jobs in Auckland.

"These are good jobs with the highest average salary levels for a food manufacturing sector, and the second highest for a farming sector," says Mr Bailey.

"Federated Farmers and DairyNZ have a workplace action plan underway to make sure the working environment for jobs in our sector is a good one that goes beyond compliance levels."

At a district level in New Zealand, the dairy sector is responsible for one in five jobs in the Waimate, Otorohonga and Southland districts, more than one in ten jobs in Matamata Piako, South Taranaki,

Hauraki, Waipa, Ashburton, South Waikato, Clutha and Kaipara., and one in 20 jobs in Hurunui, Tararua, Stratford, Waikato, South Wairarapa, Buller, Westland, Timaru, and Manawatu.

"Over the past 15 years, the dairy employment has grown by an average of 3.7 per cent per year, over twice as fast as the 1.7 per cent recorded for total employment" says Mr Bailey.

The report outlines how

the economic contribution goes beyond the farm gate. It found dairy processors are spending \$5.4 billion on non-milk inputs like equipment hire, management services and packaging each year.

Additionally, dairy farmers are spending \$12.2 billion dollars on goods and services within their communities. This flow through economic effect means the dairy sector accounts for more than ten per cent of regional GDP in

the Waikato, the West Coast and in Southland.

"The dairy industry has been working hard to also invest in and deliver on sustainability," Mr Bailey said.

"There is a commitment to stock exclusion from streams, to riparian planting, better effluent management and better nutrient budgeting. The sector is proud that these efforts are beginning to translate into

noticeable improvements."

"Over the past four years dairy processors have also invested more than \$2 billion in processing capital to improve processing efficiency and diversity New Zealand's dairy production mix."

"These investments will support the sector to continuing delivering high-quality, safe dairy products with increasing value for consumers".

104.6 HECTARE DAIRY FARM



132 Goodwin Road, Okato

Here is an opportunity to own a farm with good scale and amenities. This farm comes with a 30 aside herringbone cowshed, huge calf shed, workshops, PKE shed and wide races which make it a pleasure to run. It features a great contour which means the farm is predominately mowable. With a history of good fertiliser application and located in an area where you can feel summer safe, an even growth curve can be expected.

To complete this tidy package the farm features two homes. The main house is very well-kept and has three bedrooms plus an office. The second house has three bedrooms and ample garaging to compliment this property.

A 57.6 hectares neighbouring farm owned by a separate vendor is also for sale.

For Sale: By negotiation
www.bayleys.co.nz/522246
Phone agent to view.



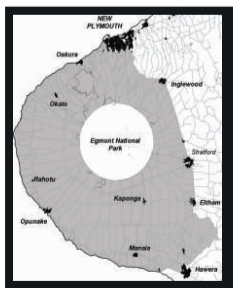
John Blundell
M 027 240 2827
B 06 759 5195
john.blundell@bayleys.co.nz

Success Realty Ltd, Bayleys, Licensed Under The REAA 2008

BAYLEYS
MIRAZ

WANT TO DO BUSINESS IN OUR AREA?

Talk to us today!



Opunake and Coastal News is distributed free to every home & business within the rural area, bounded in the north by the New Plymouth city border, extending east to Egmont Village and around to the edge of Stratford, south to Hawera city border and inland to Kaponga & Eltham. We want to be involved with your business. Call today and discuss your marketing options with us.

OPUNAKE & COASTAL NEWS

Promote your business or event in our area, call us on:

Ph/Fax: 06 761 7016 - 23 Napier Street, Opunake or e-mail us: ads@opunakecoastalnews.co.nz

Comfort, class and panoramic views

A lifestyle block with a modern and comfortable five bedroom two storey house and panoramic views of the Kaitake Ranges and surrounding countryside has just come on the market.

Nestled several kilometres off Surf Highways 45 on Upper Timaru Road and just six minutes from Oakura and Okato, the house set in two and a half acres has a huge open plan living area which includes a new kitchen, a living room with a log fire and a dining area. Views from this attractive focal point of the house encompass the surrounding farmland, the Kaitake Ranges, Mount Taranaki and the sea in the distance. Off the living area is an enclosed porch from which there is access to an immaculate fully fenced



The main living area.



One of the upstairs bedrooms.

garden. A sliding door from the main living area also leads to a second sitting room and access to the garden via an expansive deck.

There are three double bedrooms including the master bedroom with a walk in dressing room. Upstairs are two cute bedrooms with angled walls with built in wardrobes. Two bathrooms, one with a claw foot bath complete the interior.

Apart from the main living areas which have

stained floors, the house, with the exception of the tiled bathrooms, is carpeted throughout.

Owners Mike and Jasmine Parnell are understandably reluctant to sell but have decided to downsize due to ill health. The couple who migrated from Australia five years ago also share the house with Michael's parents who followed them to New Zealand three years later. With separate access and two bathrooms the

house has proved ideal for the two families.

The couple recently installed two efficient heat pumps and an HRV system. As well as the log fire having a wetback, this energy efficient home also has solar water heating on the roof. "It's a big saver," says Mike.

The property also boasts a huge implement shed with running water and power and room for at least three cars. The grounds include three raised vegetable gardens and several small fenced paddocks, where Gary, their cute Kune Kune pig resides along with some chooks and ducks. Plus a couple of rabbits. Jasmine who volunteers at the SPCA clearly is "an animal lover."

They have also been

running a few beef and sheep.

The school bus goes near the gate to take their two 7 and 8 year olds to Coastal Taranaki School. They are actually zoned for both the Okato and Oakura schools.

"It's a wonderful family home," says Jasmine, just wonderful for the children.

The property is being marketed by Pat McFetridge from Harcourts.



Gary, and the chooks in one of the fenced paddocks.



The sunporch off the main living area.

Harcourts

Residential, lifestyle and farms around The Coast and New Plymouth



Pat McFetridge AREINZ
M 027 273 3940 AH 06 752 4219

Pat & Gemma
Rural | Residential



Gemma Patten
E gemma@taranakiharcourts.co.nz



Blagdon 51 South Road

2 1 1

Elevated, Private, Stunning Views

This very tidy, 2 bedroom plus office, 1950s home is in a great location near shops, schools and within walking distance to Ngamotu beach. Positioned for the sun, this well-presented home has open-plan living, modern kitchen and bathroom, gas heating and heat pump. The elevated living area is warm and sunny with views of the surrounding area and Tasman sea. Single basement garage and workspace with internal access, covered-in spa pool area, greenhouse and good off-street parking.

For Sale

Negotiable Over \$365,000
View by appointment
www.taranaki.harcourts.co.nz/NP6534,
www.open2view.com/387274

Pat McFetridge
M 027 273 3940 P 06 752 4219
Gemma Patten
Team Taranaki Ltd Licensed Agent REAA 2008



Oakura 245 Timaru Road

5 2 3

A Very Modern Lifestyle

Alongside the Kaitake Ranges and just up from Surf Highway 45, between Oakura and Okato is this 1 Hectare lifestyle block with a modern 5 bedroom home. Enjoy unsurpassed panoramic views of the sea, ranges and farmland. Modern kitchen, large open plan living and a separate lounge are features of this home. On the Eastern side is a fabulous covered in deck, great for outside dining. A large 3 bay workshop/garage, chicken sheds and raised vegetable gardens make for a wonderful lifestyle for young families. Enjoy peace, tranquillity and grow your own food.

For Sale

Buyer Enquiry Over \$590,000
View by appointment
www.taranaki.harcourts.co.nz/NP6506

Pat McFetridge
M 027 273 3940 P 06 752 4219
pat@taranakiharcourts.co.nz

Gemma Patten
gemma@taranakiharcourts.co.nz
Team Taranaki Ltd Licensed Agent REAA 2008



Hurworth 11 Fernbrook Drive

3 2 2

Wow - Space, Luxury And Location

This brick home has 3 bedrooms (master with ensuite and walk in wardrobe), office, open-plan living, double garage, 751m² section. Built with space, warmth and distinctive features, the stunning kitchen has high-tech chattels, marble benches, double wall ovens and a scullery - perfect for the chef in the family. The spacious open-plan living can be rearranged to suit for entertaining. Large stacker doors provide easy indoor/outdoor entertaining flow.

For Sale

Negotiable Over \$672,000
View by appointment
www.taranaki.harcourts.co.nz/NP6546,
www.open2view.com/387754

Pat McFetridge
M 027 273 3940 P 06 752 4219
Gemma Patten
Team Taranaki Ltd Licensed Agent REAA 2008



Looking forward to Field days

Two of the country's pre-eminent agriculture brands have joined forces to foster innovation and lead change in New Zealand's primary industries.

A three-year partnership between the NZ National Fielddays Society and Farmlands Co-operative Society has been announced.

The alliance positions Farmlands as a major NZ National Fielddays Society sponsor, supporting key events at the NZ Agricultural Fielddays in June, including Rural Bachelor of the Year, No. 8 Wire and Tractor Pull.

Farmlands brands NRM, McMillan and Gulf Oil have partnered with NZ National Fielddays Society to support their other major events – Equidays, held in October, and The Transport and Heavy Equipment Expo (THE Expo) which is to be held 2-4 March.

"We are delighted at this partnership with Farmlands, and the opportunity it presents," said NZ National Fielddays Society CEO Peter Nation. "The NZ National Fielddays Society and Farmlands have similar

values and we are both passionate about innovation and positive change in the agricultural industry."

"I am confident that our partnership with Farmlands means we can grow Fielddays and our other key events, as well as the business overall."

The NZ National Fielddays Society's mission is to advance agriculture for the benefit of New Zealand through collaborate leadership in technology, innovation, education and internationalisation. The charitable organisation was founded in 1968 and will celebrate its 50th anniversary in 2018.

Farmlands CEO Peter Reidie said the partnership would benefit New Zealand farmers and he was delighted by the newly cemented relationship and the potential it held for the agricultural sector. "Farmlands was born from the desire of everyday farmers to work together for a better deal. Our partnership with the NZ National Fielddays Society will support their events to grow to the next level and help the industry to find new,



NZ National Fielddays Farmlands CEO Peter Reidie shakes hands with NZ National Fielddays Society CEO Peter Nation.

smarter ways of doing things. New Zealand agriculture needs more collaboration and Farmlands intends to play a leading role here, and our partnership with Fielddays is a great start," said Mr Reidie.

NZ National Agricultural Fielddays is the largest event of its kind in the Southern Hemisphere. In 2016 the event generated \$430 million in economic benefit for the New Zealand economy.

There were 1,462 exhibitor sites and 130,684 visitors through the gates over the four-day event. Last year economists valued the Fielddays brand at \$380 million. The theme for Fielddays 2017, which will be held from June 14-17 at the Mystery Creek Events Centre, is 'leading change'. Mr Nation said the new partnership will assist change to happen.

Taratahi confirmed to run their own programmes in Taranaki

New Zealand's largest specialised agricultural training provider Taratahi will deliver its own agricultural courses in Taranaki from next year, and it remains business as usual for students.

Taratahi Agricultural Training Centre has been running courses from its regional campus in Taranaki since 2004 and, between 2011 and 2015, partnered

with the Western Institute of Technology in Taranaki (WITT) to do so.

Now that Taratahi has standalone accreditation to deliver its own courses nationally from 2016, it will no longer deliver its Level 2, 3 and 4 programmes through WITT.

While the partnership with WITT has helped Taratahi grow in Taranaki, Taratahi Programme Manager Grant

Kobus says it's an exciting step to deliver their own courses from 2016.

"We are thrilled that we are going to be delivering national Taratahi programmes in the regions, and students will enrol directly with the organisation," Kobus says.

"Partnering with WITT for the last four years has really helped our organisation grow. The administrative

support that comes with a big organisation like WITT was of great help to Taratahi in Taranaki. As well, the student support services they offer our farming students were outstanding. We are pleased to announce that we are now at a point where we can offer the quality learner support and wrap-around services our students need."

Taranaki programmes will be supported from Taratahi's head office in Masterton, including comprehensive administrative and student support and pastoral care.

"We have designated programme heads working from our Head Office in Masterton to ensure the

quality of our training. This also means we have flexibility within the programme to make changes where we need to."

"Running our own programmes means that we can be more consistent with what we offer nationally. This would allow students who move regions while studying to easily transition into a programme in another region. Programmes can also be delivered where there is a need for training," Kobus says.

In Taranaki we are offering a free introductory course that runs for 12 weeks, with rolling intakes throughout the year. This course is

great for anyone who is new to the industry, wants to upskill or has enrolled in a higher level programme later in 2016 and wants to brush up on their skills prior to starting study.

Our signature pre-employment programme 'Work Ready' is still being offered, with some small changes to content to reflect industry needs.

At Taratahi, we're looking for students who will be tomorrow's agricultural leaders. Be the future of farming and study with us in 2016.

If you are interested in any of our courses please phone 0800 TARATAHI.

Rural Women joins firearms safety group

The newly formed Firearms Safety Council of Aotearoa New Zealand includes shooting clubs, associations and affiliated organisations like Rural Women New Zealand (RWNZ) concerned about community safety with firearms.

"Rural Women New Zealand have an authoritative rural voice and are pleased to be included on this Council" says Fiona Gower, National President of Rural Women New Zealand.

RWNZ are represented on the Firearms Community Advisory Forum and are also members of the Police and Rural Stakeholder's Partnership.

Rachael Dean, RWNZ's Finance Chair and representative on the Firearms Safety Council, is looking forward to collaborating with other groups to reduce accidents

involving firearms. "RWNZ want to work with associations to improve safety, and encourage firearms' owners to learn more about the safe use of firearms." RWNZ has made several submissions to government regarding rural policing, safety and emergency services. In August last year, RWNZ presented a submission at the Law and Order Select Committee on illegal possession of firearms. The submission stated concerns about the shortage of police in rural areas, and the impact of organised and firearm-related crime on community safety.

RWNZ has also expressed concerns about changes to firearms' licensing, training and testing, believed there needed to be further consultation with stakeholders and rural

firearms' owners.

Interim Chair of the Firearms Safety Council, retired Police Inspector Joe Green, says, "one of the key objectives of the Council is to provide advice to government agencies and other organisations, such as the media, on firearms safety related matters."

The membership of the Firearms Safety Council includes the NZ Deerstalkers Association, Pistol NZ, NZ Shooting Federation, NZ Pig Hunters Association, Sporting Shooters Association of NZ, NZ Sporting Industry Association, Antique and Historical Arms Association, Federated Mountain Clubs, Target Shooting NZ, Firearms Safety Specialists NZ Ltd, NZ Black Powder Shooting Federation, NZ Service Rifle Association, Rural Women NZ.

FINER

SPRAYING SERVICES LIMITED

MOBILE
 027 444 9189 GRANT
 or 027 444 9190 JIM

- Crop Spraying
- Pasture Spraying
- Facial Eczema

BOOM SPRAYING SPECIALIST

Accurate Application - Sound Advice

Hopes of Taranaki rests with these four



Pungarehu Golf

The Mellow Puff tournament was held on Friday February 3, with 25 teams of six taking part. After 65mm of rain fell the day before, a beautiful day dawned at Pungarehu Golf Club and the sun shone for a wonderful day of golf, friendships and reminiscing about special people lost to cancer.

\$17,000.00 was raised from the tournament and this will greatly help many children and their families.

On Monday February 6, the Coastal Champs 27 hole tournament was held at Pungarehu Golf Club.

Results: 0 – 12 Brook Gray, 13 – 17 John Gilligan, 18 – 24 Pat Carr, 25 + Collin Harrison.

Ladies Results: 0 – 18 Ann Braithwaite. 18 + Jo Kennedy.

Pungarehu's next tournament is on Wednesday March 15.

Terry and Tanya Long along with their hard working committee thanked all the players who took part in the day and all the generous sponsors who gave to support this wonderful event in memory of their daughter Melissa.

At Left

The team of bowlers from Opunake who were finalists in the Taranaki Women's Open Fours held on January. Although they lost to Papakura, they were the best Taranaki team in the competition, and as such will compete against other regions in Dunedin on March 15-16. From left Bev Robinson(skip), Eileen Rothwell, Nell L'Ami, Val Langton.

NIWA looking at climate change and fish

The effects of climate change on fish are being studied in a world-first trial at NIWA's Bream Bay marine science centre.

World-renowned ocean acidification researcher Phil Munday and members of his laboratory from James Cook University in Queensland are working with NIWA staff to look at the impact of increased CO2 levels on kingfish, using NIWA's aquaculture facilities in Ruakaka.

"We already know raising temperatures and changes in CO2 can have quite substantial effects on some fish, such as affecting growth, metabolism and behaviour.

But most of the work to date has been done on Northern Hemisphere species such as cod, or coral reef fish," says Professor Munday.

"Very little is known about the effect on larger pelagic species, which could be highly susceptible, but are actually very difficult to work with. They're very hard to culture – not many places in the world are able to culture them, but the NIWA team have the expertise," he says.

"We are working with yellowtail kingfish larvae in big tanks, replicating the warmer and more acidified conditions expected at the

end of the century, so we can see how rising temperatures and increased CO2 affects them.

"Kingfish are important not just to commercial and recreational fishers in New Zealand and Australia, people throughout the Pacific rely on these fish for their daily sustenance."

Professor Munday says there appears to be enough genetic diversity in the NIWA kingfish brood stock to be able to test for heritability, or whether some family lines are more resilient.

"It's been great to blend our expertise and knowledge with the NIWA team's ability to culture these fish.

We couldn't do this in Australia to this standard – the ability of NIWA to do what we need has been really impressive," he says. It's the first trial of its kind at Bream Bay, and NIWA Assistant Regional Manager Michael Bruce says he's keen to attract more of this work. "We want to raise the profile of our capability and the way we work with outside groups."

The five week-trial is being managed by the Pacific Community (SPC) and James Cook University as part of the SPREP-led "New Zealand Pacific Partnership on Ocean Acidification".

On this month in history

Ian Thorpe slips

On March 27, 2004 olympic champion swimmer Ian Thorpe lost this chance to defend his 400metres freestyle title at the 2004 Athens Olympics. The Australian swimmer was disqualified from competing when he fell off the starting

blocks into the pool. He had imagined he heard the starting pistol when he heard a loud noise.

At 15 he became the youngest male world champion and dominated the 400m event for six years.



CAMPBELL CONTRACTING LTD



NEW GRASS/GRASS TO GRASS

Call us for all your new grass and drilling requirements

Rusty 027 280 0743 | www.campbellcontractingltd.com | Michaela 027 274 5662

Proud to support the Opunake Boat and Underwater Club

2001 Ford Courier XLX

Double Cab, Towbar
4WD, Mags, Canopy
5 Speed Power Steering
Electric Windows, Diesel

\$8,995



DON OAKES MOTORS

Broadway, Stratford

Phone & After hours (06) 765 4383

Fishing competition finishes on strong note

The annual Shell Todd Oil Services Limited sponsored Opunake Boat and Underwater Club competition kicked off much earlier this year with registration night at the club rooms on January 27. Due to the inclement weather up until then the competition was extended for one week to February 18.

The competition finished up on a pleasant Saturday evening with a complimentary roast meal and prize giving with spot prizes and auctions. Despite dodgy summer weather, with windy conditions plus some big swells during the competition, almost all the ninety registered anglers and seventeen divers had an opportunity to fish, whether on their usual boats or by jumping in with someone else.

West Coast Marine kindly put up \$500 worth of vouchers as spot prizes for those participants who didn't have a winning fish. These were gratefully accepted along with a number of other generously donated spot prizes.

Ross Woolford came out on top for the second year in a row, with his 12.56Kg Snapper caught on the first weekend followed by Jamie



Steve Corkill congratulates Ross Woolford.

Ratahi and Gareth Collins who also had Snapper over 11Kg. Jamie weighed in the closest competition target fish, a 9.26Kg snapper with the target being a 9.25Kg snapper.

Blue Cod sponsored by MCL (Malcolm Campbell Livestock) was won by David Lee with a monster 2.57Kg cod, followed by Steve Corkill and Terry Sullivan.

Kahawai section sponsored by ECOLAB produced some good fish with Hamish Campbell winning with a 3.32Kg fish, followed by Lynda Corkill and Graham Naylor.

Gurnard was sponsored by Tasman Marine and was a Bounty Hunter clean sweep until Malcolm Sayer produced a 0.94Kg winner, followed by Paul Phillips and Grant Hill.

Trevally were sponsored by ASB Bank and produced good fish with Garry Northcott's 3.85Kg on top followed by Leon Van Vurren and Steve Corkill.

The Tarakihi, sponsored by Coastal Services Ltd, was again won by David Lee, this time with a 1.48Kg fish, followed by Daniel Fergus and Gerald Bourke.

Tuna, also sponsored by Coastal Services Ltd, were around early in the competition with a tuna being the first fish weighed on the first day. The winner was once more David Lee with a 9.08Kg fish, followed by Garry Northcott and Marty Fergus second equal

with fish weighing 9.01Kg. Kingfish, sponsored by Campbell Contracting was won by Steve Corkill with a 13.96Kg fighter followed by David Lee and Craig Lock and Gordon Beekman were third equal.

A new section was Crayfish, kindly sponsored by Sandfords with a wetsuit also on offer from Blair Burnett of MacDonald's Real Estate. The winner was Mick Severn with a 2.09Kg fish followed by Ross Woolford, Jess Sayer and Hamish Campbell.

As usual the Coastal Services Limited "Top Boat" annual challenge trophy was keenly contested by the skippers and their crews. This year the trophy was won by Garry Northcott on his magnificent boat "E fish n C" with top points mostly earned by David

Lee's multiple section prize winners. "Big Blue" was second followed by "Bounty Hunter".

The auction for Silver Fern Farms rump steak meat packs and Tasman Marine lifejackets were sought after, with Sean Luttrell and Graham Payne competing to extract the highest bids from every quarter.

The raffle was a high end \$600 Stray line Rod and Reel Combo kindly sponsored by Collins Sports, this was won by Heta Smith.

The Club and committee were very happy with the event and sincerely thanks all those that participated, and sponsored or donated goods, and especially all those people that pitched in to make this a successful event. Feedback to improve the competition in future is welcome.

Right into Outdoor Power Equipment **STIHL**

Time to get your Firewood!

64cc
20" Bar **\$1595 inc**
MS 391-Z Farm Boss

FREE extra chain, FREE 5 ltrs chainbar lube,
FREE 1 ltr 2/stroke oil,
FREE Combi can for oil and fuel

COLLINS SPORTS CENTRE
Tasman St, Opunake Ph: 761 8778



Top Boat Crew, From left., Leon Van Vurren, David Lee, Gordon Beekman and Garry Northcott (Skipper of E Fish n C) with trophy being presented by Steve Corkill, Commodore Opunake Boat and Underwater Club.

MALCOLM CAMPBELL LIVESTOCK

VISIT WWW.MCLIVESTOCK.CO.NZ

COWS FOR SALE

- * 19 Rising 2nd Calver. Young Frsn X cows. BW 119 PW 180 New figures \$1680
- * 70 Frsn & FrsnX Cows. BW 70 PW 65 \$1750
- * 34 Frsn & FrsnX 2nd Calvers. BW 82 PW 115 \$1800
- * 5 Xbred In calf holdover Cows. BW 122 PW 204 New figures \$1875
- * 27 Frsn & Frsn X. Sound 8 & 9yrs In calf cows BW 55 Pw104 \$1250

HEIFERS FOR SALE

- * 77 Frsn heifers. Complete replacement line. BW 104 PW 106 \$1650 (Can be computer split)
- * 50 Frsn & Frsn X In calf heifers. Immediate delivery BW 90 PW 103 \$1500
 - * 16 Kiwi X In calf heifers BW 90 PW 109 \$1625
 - * 33 Frsn & Frsn X heifers BW 106 PW 121 \$1680
 - * 25 Frsn & Frsn X heifers BW 110 PW 113 \$1750
 - * 40 Frsn & Frsn X heifers BW 114 PW 116 \$1750
 - * 57 Frsn & Frsn X heifers BW 114 PW 125 \$1750
 - * 33 Xbred heifers BW 106 PW 122 \$1680
 - * 8 Jersey Heifers. Immediate delivery BW 134 PW 114 \$1350
 - * 44 Frsn & Frsn X heifers BW 106 Pw119 \$1600

BUDGET COWS FOR SALE

- * Budget Cows For Sale
- * Frsn, FrsnX and Jersey cows

CATTLE WANTED

- * MT Frsn & Frsn X Cows
- * MT Frsn & Frsn X Heifers
- * In calf Cows
- * In calf Heifers
- * Weaner Heifers
- * Cull Cows
- * Beef Steers and Heifers

CONTACT MALCOLM CAMPBELL
Phone 06 761 8192 or 027 234 0635
Email mclivestock@xtra.co.nz

Tasman Marine

Call us and cruise into the boating season

- We service all brands
- Full chandlery serviced
- Re powering options Yamaha and Honda
- Professional and friendly advice

27 Ocean View Parade, New Plymouth
Ph: 06 769 5656
www.tasmarine.co.nz
143 Glover Road, Hawera
Ph: 06 278 7187

BOATING & OUTDOORS
Supplies for the Kiwi lifestyle

HONDA MARINE

YAMAHA

EXTREME
SERIOUSLY ALUMINIUM BOATS

TWO GREAT LOCATIONS

TRADES & SERVICES

COASTAL STOPPERS. Phone Glenn 027 524 5745

HEARTLAND CONSTRUCTION for alterations. Ph 027 236 7129.

McNEIL DECORATING – for all your painting and decorating. Ph: Jason McNeil 027 233 4584

KNIFE SHARPENING available. \$5 per knife at Collins Sports. 761 8778.

APPLES Sunrise. Grown here in Brixton and tree ripened. Eftpos, 9am – 4pm. Closed Tuesday's. Maple Park Orchard, 191 Waitara Road. Ph: 06 754 6885.

HEARTLAND CONSTRUCTION for concrete work. Ph 027 236 7129.

MULTIPLE SCLEROSIS For information and fieldworker services Ph: 06 751 2330 www.mstaranaki.co.nz

MOBILITY SCOOTERS new from \$2495, **POWERCHAIRS** from \$2495. Trade in needed. Lottery Grant Scooters + forms. Free Delivery. Scooterman 06 769 9061

TRADITIONAL ACUPUNCTURE @ CoastalCare
26 Napier Street, Opunake
Thursdays 11am - 4pm
Nigel Cliffe
Member Acupuncture NZ, ACC provider.
Ph: 06 763 8801 - 027 681 9524

QUALITY PAINTER AND PAPERHANGER – Ph: Bryan McNeil 027 465 8631

WHEELCHAIRS from \$299. New models with attendant brakes, lightweight from 9kgs. Scooterman 06 769 9061

CARPETS second hand, large selection After Disaster Ltd 223 Devon St West, NP. Phone (06) 769 9265

WALKERS folding with brakes + seat from \$199. New colours. Scooterman 06 769 9061

GARDEN MAINTENANCE Experienced gardeners Ph: Dave and Angela 021 217 5052

ARE YOU GETTING your greens or having a balanced diet? Vital greens with 76 vitamins, minerals, superfoods, probiotics, etc, add it to a protein powder. A very good way to start your day. The Health Shop in Centre City 7587553

FARMBIKE SERVICES Warea

For all your farmbike needs

PH: 06 752 8054
027 282 9338
Anytime

WANTED TO BUY

SCRAP METAL - for all scrap metal Taranaki-wide, give us a call. Molten Metals (06) 751 5367 www.moltenmetals.co.nz

ARE YOU TIRED, not sleeping, headaches, cramps? You maybe deficient in magnesium, one of the minerals New Zealand soil is deficient in. Come into the Health Shop in centre city for a chat about your mineral balance. The Health Shop in centre city 7587553

FOR SALE



TRAILER MANOR CARAVAN

A home away from home or a spare room. Sleeps 7, shower, toilet, immaculate.

Coastal Welders 027 255 8677 or 06 752 8138
email: coastalwelders@xtra.co.nz - Warea

SITUATIONS VACANT

LOOKING FOR BARISTA, Café Chef and duty manager for Headlands Opunake. Please contact or txt 021 046 5879

Call us today to advertise
06 761 7016
Next issue out March 17

Rahotu Tavern

Mature Cook/Bar person required for casual shifts.
Alternate weekends, approx 10 hours a week.
Must have experience.
Call Jackie for more info 06-7638847

CHILDCARE/NANNY WANTED Pihama area

We are a lawyer and dairy farmer looking for a caring, reliable and trustworthy person to provide before and after school care for our two children in our home.
* 6.5 yr old girl, 4.5 yr old boy
* Hours negotiable
(approx. 16-20 hrs per week over 4 or 5 days)
* Hourly rate negotiable
* Extra hours over holidays etc would be appreciated
* Some transportation required - licence and car required
* Duties include school drop (Auroa), pick up from bus, homework etc.
Start date negotiable between early April and late June.
Contact us at jemmagering@gmail.com or phone 06 761 8814 (evenings)

PUBLIC NOTICES

OPUNAKE BOAT AND UNDERWATER WATER 2017 FISHING COMPETITION

The Committee would like to thank the following for their sponsorship and support.
Shell Todd Oil Services Ltd
Collins Sports
West Coast Marine
MCL (Malcolm Campbell Livestock)
ECOLAB
ASB Bank
Coastal Services Ltd
Campbell Contracting
Sandfords Rural Carriers
Blair Burnett - Rodney Perrett of MacDonald Real Estate
Silver Fern Farms
Tasman Marine

OPUNAKE RAHOTU VETERINARY TRUST

Financial assistance is available to students to undergo tertiary education relating preferably to agricultural or horticultural studies although consideration will be given to other applicants.
Application forms available from:-
The Secretary
P O Box 117
OPUNAKE 4616
PHONE 761-7150
EMAIL: nevisbrewer@vodafone.co.nz

CHURCH NOTICES

Opunake & Okato Co-operating Parish CHURCH SERVICES
St Paul's Opunake Co-op & Rahotu
Opunake Cooperating Parish St Pauls, Havelock St, 9.30am every Sunday and the
Rahotu - Wesley - 11am first Sunday of the month.
Oakura - St James - 10am, 2nd & 4th Sundays.
Okato - St Pauls - 10am, 1st & 3rd Sundays.

Opunake Catholic Church
SUNDAY 8.30 am at Pungarehu (St Martins),
10am at Opunake (Our Lady Star Of The Sea).

Other areas
Manaia - Sacred Heart - 1st & 3rd Saturdays at 5pm
(2nd, 4th and 5th Sat at Hawera's St Josephs).
Kaponga - St Patricks, Sunday 8.45am
ALL WELCOME

THE WAVE

Pentecostal Church 64 Domett Street, Opunake
Sunday Services 10.30am
Women's Group 10.30am Tuesday
Men's Group 7 pm Wednesday
Youth Group 7pm Friday
Come along or contact Pastor Murray 027 688 7378

ST. BARNABAS

Anglican Church 141 Tasman St, Opunake
Sunday Services 10.00am
Communion 1st, 3rd & 4th Sunday
Prayer & Praise 2nd Sunday
Every 5th Sunday all 4 churches gather for a Combined Service

Jersey Girls Farmed and Dangerous
A musical comedy by Lynelle Kuriger

AUDITIONS
Sunday 26 March - 7pm
@ The Castle, Regan Street, Stratford
A large cast of singers, dancers & actors (15 years & older) is required for our next production in June.

For further information, please phone the Director
027 8360518 (evenings)

CarterAgri Ltd
Ph. 027 937 6334

TRACTORS & MACHINERY WANTED

Any age, any condition, anything considered
027 937 6334

PUBLIC NOTICES

Performing Arts Grants

Your invitation to share the dream

The Dame Malvina Major Foundation is proud to provide funding opportunities to talented young Taranaki Performing Artists.

Applications are now being invited for the annual funding round, closing at 5pm on Friday 31st March 2017.

Grants are available in four categories to support the cost of education, training, and development in the performing arts in New Zealand or overseas.

Secondary: For Taranaki Secondary School Students aged 12-18 years.

Elite/Tertiary: For performers from Taranaki pursuing a career in the performing arts through tertiary qualifications.

Group: For groups whose student members are based in Taranaki and are providing training and/or development opportunities in performing arts.

Primary School Aged Groups: For groups or organisations based in Taranaki which support the training and development of performing arts for primary aged children.

For an application pack and further information, please contact Rebekah Lock on 06 757 3155 or email dmmf@staplestaranaki.co.nz



TSB COMMUNITY TRUST

www.dmmfoundation.org.nz

Enrolments Welcome

St Patrick's School Kaponga

The St Patrick's School Kaponga Board of Trustees wishes to invite new enrolments for Year Groups 1-8. Enrolments are available for both preference and non-preference students.

Our small vibrant rural Catholic school offers:

- * Small classes with professional staff committed to quality education.
- * Support for all students, whanau and the wider school community.
- * Catholic values and virtues.
- * Access to ICT (1 computer per child).
- * Regular learning experiences outside of the classroom.

Please contact us at any of the following:

School - 06 764 6563 / office@stpatskaponga.school.nz
Principal - principal@stpatskaponga.school.nz
Or visit our school at 71 Victoria Street, Kaponga.



Our next issue is due out MARCH 17

Dairy Support Land

**Lease by Tender
3979 South Road Opunake**

Tenders are invited for the lease of 30ha of dairy support land owned by the AP & AM Hickey Family Trust located at Mangahume, 2km south of Opunake. This property is being offered for lease for the grazing of dairy replacement stock only and the harvesting of hay/silage supplements. The term of the lease will be three years from the 1 May 2017.

An open day for prospective tenderers will be held on the property on

Saturday 4 March from 10am to 12 noon.

For the lease document and tender details please contact:

Robert Mills

Thomson O'Neil & Co

1 Fenton Street, Stratford 4332

Ph: 06 765 5299

Email: law@thomsononeil.co.nz

Tenders close at 4pm 17 March 2017



OPUNAKE BUSINESS ASSOCIATION

Meeting 1st Monday of each month at 5.30PM

Hughsons & Associates Boardroom at the Opunake Business Centre, 23 Napier St, Opunake



SPORT NEW ZEALAND RURAL TRAVEL FUND

Applications for financial assistance under the Sport NZ Rural Travel Fund are now open.

The fund is open to sports clubs and school teams with young people aged between 5-19 years who require assistance with transport expenses to regular, local sporting competitions.

Application forms are available from all LibraryPlus centres, the Council Contact Centre in Albion Street, Hawera, or the Council website www.southtaranaki.com

For further information please contact:
Executive Assistant Community Services
Phone: 0800 111 323 or 2780555
Email: maryse.ropiha@stdc.govt.nz

Applications close **Friday 7 April 2017** at 4.30pm.



Eltham Smallbore Rifle Club

Annual General meeting

To be held at the clubrooms

5 Pinny Drive

Eltham on Monday 13th March at 7.30pm.

All members and intending members welcome.

Club nights Mondays and Fridays from 7pm.

All gear and tuition supplied.

No Firearms Licence required.

What's On Listings



JONATHAN YOUNG

Join me for a coffee at the Sugar Juice Cafe, Tasman Street, Opunake. Friday 10 March, 11am - 12pm

OPUNAKE BUSINESS ASSOCIATION

Meet on the 1st Monday of each month.

OPUNAKE COUNTRY MUSIC CLUB

First Sunday of each month, Opunake Town Hall, 1-4pm.

SCHNITZEL NIGHT

Every Wednesday at the Stony River Hotel, Okato

COASTALCARE - LISA KEEN AUDIOLOGY

Wednesdays 9am - 5pm. call 027 591 4222 - 0800 555 676

TAI CHI BASICS

Thursdays 9am - 10am at Coastal Care Community Room

NIGEL CLIFFE ACUPUNCTURE

Thursdays 11am-4pm at Coastalcare, Opunake.

CLUB HOTEL TEXAS HOLDEM POKER

Wednesday and Thursday Nights at the Club Hotel.

CLUB HOTEL POOL

Tuesday Nights. New players welcome.

SURF INN

Every day free pool. Every Friday free sausage sizzle from 5. Every Sunday afternoon. Pool comp

COASTAL YOUNG FARMERS

Meet 2nd Thurs of every month at 7pm Okato Bowling Club.

TARANAKI COUNTRY MUSIC HALL OF FAME, MANAIA

Running every Thursday night from 7.30pm, 11 Surf Highway, South Road, Manaia.

EGMONT EUCHRE CLUB

Meets every Thursday 1pm at the Opunake Bowling Club

CAPE EGMONT HISTORIC LIGHT & MUSEUM

Open 11am - 3pm weekends, Bayly Road, Warea.

TODD ENERGY AQUATIC CENTRE

Family fun times 10.30am to 4.30pm.

COASTAL SINGERS

7pm every Wednesday night. Inquiries ph 761 8654.

ELTHAM BUSINESS ASSN FRIDAY MARKETS

8am to 1pm, Carpark of Touch Point, High Street, Eltham.

TSB COMMUNITY TRUST FUNDING CHAT

Check out of advert on page 31 for full details and dates/venues near you.

PERCY THOMSON GALLERY

Taranaki Ki Tai, Wharehoka Smith, March 3-26, 2017.

BUTLER'S REEF, OAKURA

'Sonic Delusion' March 4 from 7.30pm

DAIRY SUPPORT LAND LEASE BY TENDER

3979 South Road Opunake, Open Day Saturday 4 March from 10am to 12noon. Refer public notice

HOLLARD GARDENS

International Children's Day activities, Sunday March 5.

RAHOTU PLAYCENTRE FAMILY FUN DAY

Tuesday 7th March 2017, 9.30am til 12.30pm, Wesley Church Lawn (Beside Rahotu School).

LUSHINGSTON JACKETS

Autumn Collection Launch, Friday 10 March, 5pm - Late at 89 Devon St West, New Plymouth. Refer advert for details.

OPUNAKE LIONS MOUNTAIN TO SEA FUN RIDE

Monday March 13. Refer story page 32.

ELTHAM SMALLBORE RIFLE CLUB

Annual General meeting, Monday 13th March at 7.30pm.

PUNGAREHU GOLF CLUB

Coastal Classic Wednesday the 15th of March

JERSEY GIRLS FARMED AND DANGEROUS

A musical comedy by Lynelle Kuriger. Auditions on Sunday 26 March at 7pm. Refer ad for full details.

ROSE OF TRALEE

Saturday 29th April at the Plymouth Hotel.

OPUNAKE INDOOR BASKETBALL ASSOCIATION



SENIOR TEAM REGISTRATIONS 2017

Forms are available from Sandfords Event Centre or copy and paste form from our facebook page (Opunake Basketball Association) or email opunakebasketball@gmail.com

FORMS to be returned by Wednesday 1st March 2017 by email to OBA_opunakebasketball@gmail.com or drop into Sandford's Event Centre office

Send us your email address to receive draws and notices
DUTY TEAMS to supply referees and bench for the whole night. Cost \$300.00 per team plus \$200.00 bond for new teams

Mens/Womens A & B Grades

Tuesday & Friday nights - starting Tuesday 14th March

For any more information check us out on Facebook or contact us by email

Or phone Bryan Roach 027 445 7888 or

Kim Ahern 027 632 4377

Celebrating International Children's Day

FAMILY FUN DAY

at Hollard Gardens

Sunday 5 March 2017

10am - 3pm

FREE ENTRY

Bring the family, come and play at Hollard Gardens

Cool games, mural painting, scavenger hunt, pony rides, music, stories, 'Magicworks' juggling and more.

Bring a picnic lunch. Snacks and treats available.



Kindly sponsored by



Hollard Gardens

1686 Upper Manaia Rd, Kaponga

Ph: 0800 736 222

www.hollardgardens.info



WOMAD takes pride of place in New Plymouth

WOMAD - World of Music, Arts and Dance the internationally established festival, which brings together artists from all over the globe. The central aim of the WOMAD festival is to celebrate the world's many forms of music, arts and dance.

As an organisation, WOMAD now works in many different ways, but our aims are always the same - at festivals, performance events, through recorded



Claire Richardson 2016 Taranaki Rose

Taranaki Irish Social Club is organising the

2017 Taranaki Rose of Tralee Selection

ENTER NOW at www.roseoftralee.ie/roses

Competition Dates: Easter Monday 17th April, 2017
Afternoon at the Races - Harness Racing - Hawera
Interviews - Auto Lodge New Plymouth 6.30pm

Taranaki Final: Sat 29th April, 2017 Dinner and Dance
6.30pm Plymouth Hotel New Plymouth

Tickets at Reception - Live Band - Irish Dancers

For more information contact: Louise Buhler 06(274) 8494 027 330 8510
p.lm.buhler@tra.co.nz

Taranaki Irish Club

THANK YOU TO OUR SPONSORS 2016 / 17

- Taranaki Rose of Tralee Supporters Group
- McDonald Real Estate
- Ravensdown
- Sandford Bros
- D4 Irish Bar & Restaurant
- Kiser Civil Ltd
- Carac Group
- Turning Point Image & Modelling Agency
- Life Pharmacy Centre City
- Plymouth Hotel
- Mondo Man
- Gopperth Contracting
- Hawera Harness Racing club
- Taranaki Irish Club members



TISC Events

Multi Ethnic day parade NP
Sat 4th March 10.30am
join our float

Taranaki Rose of Tralee
Final Sat 29th April, 6.30pm
Tickets at Plymouth Hotel



WOMAD New Zealand 2017 sees the 13th anniversary for WOMAD held at the stunning New Plymouth site in Taranaki. Photo credit: Michael Flynn.

releases and through educational projects, we aim to excite, to inform, and to create awareness of the worth and potential of a multicultural society.

Peter Gabriel was one of WOMAD's co-founders:



"Pure enthusiasm for music from around the world led us to the idea of WOMAD in 1980 and thus to the first WOMAD festival in 1982. The festivals have always been wonderful and unique occasions and have succeeded in introducing an international audience to many talented artists."

"Equally important, the festivals have also allowed many different audiences to gain an insight into cultures other than their own through the enjoyment of music. Music is a universal language, it draws people together and proves, as well

as anything, the stupidity of racism."

WOMAD festivals are family-oriented, diverse and active musical events; sometimes offering as many as seven stages within the festival site. Since the first festival in the UK in 1982, WOMAD has held more than 160 festivals, creating events in twenty-seven countries and islands all over the world, including: Abu Dhabi, Australia, Austria, Canada, Denmark, England, Estonia, Finland, France, Germany, Greece, Ireland, Italy, Japan, New Zealand, Portugal, Sardinia, Sicily,

Singapore, South Africa, Spain, Turkey, UK, and the United States of America.

There have been more than one thousand artists at these festivals, bringing the expression of more than 100 different countries to a live audience of over one million people. WOMAD New Zealand 2017 sees the 13th anniversary for WOMAD held at the stunning New Plymouth site in Taranaki. Prior to shifting to New Plymouth WOMAD NZ occurred twice in Auckland, but now takes pride of place at the TSB Bowl of Brooklands.



Autumn Collection Launch

FRIDAY 10th MARCH, 5PM - LATE DRINKS & NIBBLES

Lushington JACKETS



91A Devon St West, New Plymouth, (old TSB Bank Building) Ph: 027 348 1460

Kode:Girl
 9 Devon Street West, New Plymouth
 Ph: 06 757 2752



See us at our stall
Womad 2017!



Hot:Goods
42 Matai St, Inglewood
Ph: 06 756 6625

www.kodegirl.com





Rehearsals for Americarna February 22.

First public performance in Opunake

Enthusiasm was abundant as musicians rocked up for rehearsals on an unscheduled Tuesday, the day before Americarna, for the sole purpose of practising their solo and combined performances for this automotive parade.

Asked by the Opunake Business Association to provide entertainment for Americana on February 22, Opunake Music Workshop members were more than happy to oblige and devote their Wednesday, taking time off work to make the day an enjoyable one for all attending the event. Musical equipment was

set up with power supplied from Pastimes (thank you Rosy) on the steps of the old Opunake Post Office, and the parking spot in front of the road cordoned off thanks to Constable Peter.

Residents and visitors perched themselves on stone walls or stood in front of the Club Hotel, listening intently to evergreen classics such as 'Teddy Bear', 'Can't Help Falling In Love', 'That's Alright Mama' and many original musical creations wafting across to the other side of the road. The Americarna cars thundered into Opunake and down Tasman Street, and were

unexpectedly serenaded and welcomed by Reno Marr, known as Ricki, Maree and Shamika Wheeler, Noel Gillie, Mike Anderson, Ruel Sanchez, Blossom Eiffe, Vic Almao, Serge Bernier, and Sam Mc Neil, who turned on their musical charm. They performed to the delight of bystanders and drivers of the honking and hooting cars, cheering them on as they passed through our town, decorated with balloons and streamers. A fantastic effort, the music group entertained the crowd from 10:30am till around 3:00pm.

If you would like the opportunity to perform

with talented musicians, singers and dancers in the music group, with the goal of being involved in live performances, please join us at 7:30pm on Tuesday March 7 at the Catholic Church lounge, 33 Whitcombe Rd, Opunake.

It would be appreciated if those who can afford to could make a gold coin donation to go towards the use of power etc. at the Catholic Church. This payment is not a requirement for attendance - all are welcome, with or without a gold coin.

Anne Montgomery

Taranaki Anniversary is going to the dogs

Every dog has its day - and on Monday March 13, the Kaponga rural swimming pool will be exclusively for dogs for the first ever South Taranaki Dog Splash Day.

After seeing the success of the New Plymouth dog swimming day held in 2016, where dogs of all sizes and shapes had a wonderful time splashing in the outdoor pools at the New Plymouth Aquatic Centre, South Taranaki District Council agreed to a suggestion from the community to open one of their pools on the last day of the season to dogs.

The entire Kaponga complex (three pools) will be open so all sizes of dogs and swimming abilities will be catered for - from those that just like to dip their paws in shallow waters to the deep-sea doggie paddler. Owners are welcome to swim with their dogs.

South Taranaki animal control staff will be on hand to answer any dog related questions and check that all dogs are wearing their current registration tag. Dogs must be social with other dogs.

This will be the last day the pool will be open before it is drained and cleaned for the

season.

Kaponga pool was chosen as it offers the best array of pool sizes and depths, with easy access for dogs. A ramp made by pool staff will be placed in the main pool so that dogs can exit easily.

Don't get in the doghouse. Bring your pooch to the Kaponga Pool, Grace Avenue, Kaponga, on Monday 13 March 13 between 12noon and 4pm. All sizes and breeds are welcome.

For human swimming, the rural pools at Eltham, Rawhitiroa, Patea, Manaia and Waverley open for their final day of the season.

Our next issue is due out
MARCH 17
Phone us today to advertise

15 DAYS - BUDAPEST TO AMSTERDAM RIVER CRUISE

**NOW TAKING EXPRESSIONS OF INTEREST
JUNE 2018 DEPARTURE**

Brand new ship, unpack once! Swimming pool on board. Everything included ie: meals, drinks, entertainment and on shore excursions. Even bikes to travel on from one stop to another along the river. Costs will include flights ex NZ, River Cruise with all inclusions and gratuities. Tour personally escorted by Bev Ellice. Information evening to follow once numbers are registered.

Call Bev and the girlz at Travelsmart
for further info email bev@travelsmartnz.co.nz or call at Travelsmart Strandon

DDI: 06 7575666 • Mob: 021 263 5985
travel@travelsmartnz.co.nz
For all the latest deals - see www.travelsmart.co.nz

Opunake Music Workshop
7:30pm Tuesday, 7th March 2017
Catholic Church, 33 Whitcombe Road, Opunake.
Bring your own instruments, basic amplification provided.

Wedding or function, planning a party?
Book us for Sound, Lighting or Video.

- We setup & operate our own Sound Equipment.
- We setup & operate our LED Lasers & Stage Lights.
- We record Video using Multi-Camera HD.

Colour Conversions Limited
Video, Audio and Graphic productions
Phone us on 027 897 8941
Website www.colourconversions.com

New Plymouth Doors Ltd
Your friendly local door specialist.

For all your commercial & garage door needs
Garage Doors - Workshop doors
Supply & Fit - Service and Repair
24 Hour Emergency Service

Drew Jeffrey
Owner/Senior Technician
Ph: 06 758 2946 - Cell 022 644 5768
email: drew@npdoors.co.nz
www.npdoors.co.nz

Promote your events in the

OPUNAKE & COASTAL


NEWS

People who put in public notices and display adverts in the **What's On Section** for events are welcome to additionally provide extra editorial and photos **FREE OF CHARGE, to help promote the event.**

Ph/Fax: 06 761 7016
Call in at 23 Napier Street, Opunake
or e-mail us: ads@opunakecoastalnews.co.nz

Pungarehu's next tournament is on Wednesday the 15th of March
"Coastal Classic"
 Mass tee off at 10am
 \$25 entry fee
 includes 2's and a sausage sizzle
 All entries to:
 Alan Crowley 06 763 8255



What's On 

Sonic Delusion
March 4
from 7.30pm

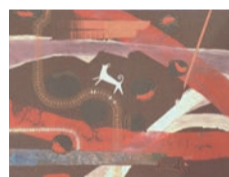
1133 Main South Rd, Oakura
 Phone 06 752 7765 - www.butlersreef.co.nz



TARANAKI KI TAI

WharehokaSmith

March 3 – 26, 2017



Tracking Kuri/
diamonds are a girl's best...

Gabrielle Belz

PERCY THOMSON GALLERY
 MIRANDA ST. STRATFORD
 art education inspiration
 PERCYTHOMSONGALLERY.ORG.NZ 06 765 0917



Kathryn Grant and Kapoi Mathieson.

Great news for Opunake and Coastal groups seeking funding advice

Anyone involved in fundraising for voluntary community groups knows at times it feels like hard work securing funding for projects and activities.

Knowing where to start, who to talk to, what funding is available and how to apply for a grant can sometimes feel like a momentous task.

Opunake and Coastal groups will be pleased to hear that from March 2017 onwards help is on the way.

On Thursday March 9, TSB Community Trust Grants advisors Kathryn Grant and Kapoi Mathieson will be at Opunake Library, for the first of a series of regular informal chats.

Held at the Opunake Library on the second Thursday of

each month between 10am and 1pm, the sessions will run from March to November.

Community group members and individuals with questions about TSB Community Trust funding can head along to have a chat to the Trust staff.

Depending on the level of interest and information required during the time available, staff are aiming to respond to queries as best they can, and follow up if needed.

Kapoi, a Warea local, says "The whole idea is to meet locals face to face, build relationships and make it easier for groups to access our funding. We also hope

to attract groups that have not applied to the Trust previously or didn't know they could".

Established in 1988, TSB Community Trust is strongly community focused and committed to helping local community groups achieve their goals.

Owner of the TSB Bank Limited and other assets, the Trust invests significantly in people, communities, and positive opportunities. A range of Community grants may be available to eligible community organisations and individuals including operational grants to help with the day to day running

of community groups, capital grants which provide support towards capital costs such as building upgrades, uniforms, computers, and programme and event grants which provide support towards the costs of running a community programme, activity or public event To date the Trust has already supported a wide range of Opunake and Coastal groups. People wanting further information about the monthly sessions or seeking advice about Trust funding can also refer to the Trust's website www.tsbtrust.org.nz, contact the Trust Office ph 06 769 9471 or email info@tsbtrust.org.nz

Search on for best rural general practice

The search is on again for New Zealand's best Rural General Practice team of the Year as judged by the community.

The award, now in its third year, will be announced at the New Zealand Rural General Practice Network's national rural health conference in Wellington which starts on March 30..

Patients of general practices deemed rural – either by way of receiving additional rural support funding or by their local alliance teams – are eligible to enter this competition.

The inaugural award was won by Raglan's West Coast Health Clinic in 2015 and in 2016 by Martinborough Medical Centre.

"The competition is going from strength to strength and it is the perfect opportunity for the rural community to tell us their stories about how rural general practice teams go "above and beyond"

the call of duty in providing health services to their rural communities," says Rural Health Alliance Aotearoa New Zealand Chief Executive Michelle Thompson.

"We want to encourage as many rural people as possible to tell their stories and nominate their favourite rural practice.

"We are delighted once again to be offering this award in partnership with the New Zealand Rural General Practice Network (NZRGPN), the Health Promotion Agency (HPA) and New Zealand Doctor."

Entries are open until close of business on Friday, March 10, and will be judged by a panel comprising representatives from each of the award partners.

The winning practice and winning nominator will be announced as part of the formal awards ceremony in Wellington on March 31, and both parties stand to win

great prizes. The winning practice will receive a prize up to the value of \$1500 and the winning nominator will receive a prize up to the value of \$500. All entries received electronically will also go into a draw to win a \$100 voucher.

Entries can be submitted online or posted. However, to make collation and judging easier the organisers would prefer as many entries as possible are completed online. Patients can complete their postcard and post direct to P O Box 82, Waipukurau, 4242 or hand it to the practice receptionist who can then forward the entries in bulk.

Postcards can be downloaded from www.rhaanz.org.nz or further hardcopies can be ordered from ce@rhaanz.org.nz

For more information please contact Michelle Thompson, Chief Executive RHAANZ, telephone 021 234 7413.

TSB COMMUNITY TRUST www.tsbtrust.org.nz

Our staff are heading your way!

Want to chat about funding?
 Keen to find out more about our Community grants?
 Need help with an application?

Come and talk to us at a local library – between 10am-1pm we will be at:

Hāwera Library: First Thursday of month
 Opunake Library: Second Thursday of month
 Stratford Library: Third Thursday of month
 Waitara Library: Fourth Thursday of month

MARCH – NOVEMBER 2017
 Visit our website for details or contact the Trust Office 06 769 9471

A day for the children

Hollard Gardens in Kaponga will become a realm for the young on Sunday March 5 with dance, music, stories and games to mark International Children's Day.

The Family Fun Day's activities will include pony rides, storytelling, music, mural painting scavenger hunt, stories, games, 'Magicworks' juggling and more.

The event will run from 10am to 3pm at Hollard Gardens, 1686 Upper Manaia Road, Kaponga. It has been organised in association with Kindergarten Taranaki and sponsored by Powerco. Entry and all activities are free. Bring a picnic lunch and

snacks and treats will be available.

Children's Day - Te Rā O Te Tamariki provides New Zealanders with an opportunity to share time with children. It takes place every year on the first Sunday of March and is a chance to celebrate how special and important our children are. See www.childrensday.org.nz.

Sunday's Family Fun Day is part of a year-round programme of free public events at Hollard Gardens, Pukeiti and Tupare, the three heritage properties owned and managed by the Taranaki Regional Council on behalf of the people of the region.



Celebrate International Children's Day at Hollard Gardens on Sunday March 5.

Free flu vaccine for people with respiratory conditions

Asthma and Respiratory Foundation NZ strongly advises people with a respiratory illness to get their free influenza vaccination from March onwards. It is best to get vaccinated before the start of the winter season, before influenza enters the community.

The free flu vaccine is available to all people 65 years of age and over, and people under 65 who have

asthma and are on regular preventative therapy, or have a chronic respiratory disease with impaired lung function. It is also free for children aged four years and under who have significant respiratory illness.

People with long term respiratory conditions such as asthma are at high risk of complications from flu, even if their symptoms are mild or well-controlled by

medication. Complications include pneumonia, heart failure and worsening asthma symptoms.

"The flu is a very serious illness that can result in hospitalisation or death, even for young and healthy people," says spokesperson for the Foundation, Dr Matire Harwood.

"Approximately one in four Kiwis are infected with influenza every year. A lot

won't feel sick at all, but can still pass it on to others. Getting the flu vaccination well before winter offers you and others the best protection."

It's important for the flu vaccination to be done every year as protection lessons over time. Additionally there is one new influenza strain in the 2017 vaccine that was not included in the 2016 vaccine. Free flu vaccinations are

available until December 31 from your GP and some pharmacies.

Respiratory disease includes asthma, lung cancer, chronic obstructive pulmonary disease (COPD), obstructive sleep apnoea, bronchiectasis, childhood bronchiolitis and childhood pneumonia. It is New Zealand's third most common cause of death, and costs New Zealand more than \$5.5 billion every year.

One in six (over 700,000) New Zealanders live with a respiratory condition, and these rates are worsening.

Respiratory disease accounts for one in eight of all hospital stays.

More than half of the people admitted to hospital with a poverty-related condition are there because of a respiratory problem such as asthma, bronchiolitis, acute infection or pneumonia.



CoastalCare Health and Community Centre

CoastalCare offers for hire, quiet, private, well-appointed room's for meetings, training opportunities & social gatherings. This will seat up to 60 people or it has the flexibility to be divided into two smaller rooms. The facilities include a lounge area & kitchenette for self-service of coffees and tea

Some of the regular services we currently have running are:

LISA KEEN - AUDIOLOGY

Every 2nd Wednesday hearing evaluation, hearing aid assessment, ACC hearing evaluation and complimentary hearing checks.

TAYLOR DENTAL PRACTICE

Offering full dental services every Thursday.

ACUPUNCTURE CLINIC

every Thursday afternoon

SURFSIDE MIDWIFERY - JO LOCKTON

supporting you from conception until baby is 6wks old - home visits & clinics as needed

TAI CHI - NIGEL CLIFFE

every Thursday, 9am-10am, low impact exercise all welcome, gold coin donation.

FOODBANK

Monday - Friday 9am - 4pm, providing basic food parcels for those in need.

BUDGET ADVICE

advice and assistance with budgets and finances, every second Wednesday.

TARANAKI PODIATRY

every 3rd Tuesday - specialised foot care for all ages in clinics

HAUMIRI MASSAGE

Every 1st Thursday

COUNSELLING

Various providers and various specialties including, relationships, drugs, alcohol, quit smoking, change support, family violence and anger management

DAIRY NZ

once a month course - delivers industry training to those in the Dairy Industry

PLUNKET MUMS COFFEE GROUP

Every 2nd Thursday 10am-11am. All mums welcome.

COASTAL PRINTERS

Wednesday and Friday 9am - 5pm, on other days orders can be made at reception.

Also permanently residing in the building are:

OPUNAKE PHARMACY

OPUNAKE MEDICAL CENTRE

ST. JOHNS AMBULANCE - PLUNKET

HEALTH BOARD SERVICES.

CONTACT: ARETHA, MANAGER, on 761 8488



EVERYBODY'S THEATRE

Opunake - MOVIES - BOUTIQUE THEATRE - HIRE
For information email: everybodystheatre@gmail.com or check facebook- Everybody's Theatre
MARCH 2017

Lollies, Popcorn, Ice-creams, Chocolate bars, Coffee & Tea For Sale	Adults \$10, Students 4-16yrs \$8, Under 4 free Senior Citizens \$8. No Eft-Pos																		
<p>MIDDLE SCHOOL: THE WORST YEARS OF MY LIFE Comedy, Kids and Family 1hr 36 mins PG: Coarse Language Comedy based on the first book in James Patterson's Middle School series. Friday 3 March 7pm Saturday 4 March 7pm</p>	<p>BALLERINA Adventure, Animated, Kids & Family 1hr 29 mins G NEVER GIVE UP YOUR DREAM Animated adventure follows ambitious young orphan Félicie (Elle Fanning) on her journey to Paris to fulfil her dreams of becoming a prima ballerina. Saturday 4 March 1pm Saturday 18 March 1pm</p>	<p>HIDDEN FIGURES Drama, True Story & Biography, Historical 2hrs 7mins PG: coarse language Based on a true story, Hidden Figures recounts how three black American women served as the brains behind several key 1960s NASA missions. Wednesday 8 March 7pm Saturday 11 March 1pm Wednesday 15 March 1pm</p>																	
<p>PORK PIE Action, comedy 1hr 45 mins M Violence, offensive language, drug use & sexual references Dean O'Gorman, James Rolleston and Ashleigh Cummings play a trio of accidental outlaws on the run in a yellow Mini in this remake of 1981's Goodbye Pork Pie. Sunday 5 March 7pm Wednesday 8 March 1pm Friday 10 March 7pm</p>	<p>MANCHESTER BY THE SEA Drama 2hrs 16mins R-13 Violence, offensive language and content that may disturb Lee (Casey Affleck) leads a solitary existence as a janitor, but is forced to return to his small coastal hometown after the death of his brother (Kyle Chandler). Saturday 11 March 7pm Sunday 12 March 7pm Friday 17 March 7pm</p>	<p>FIFTY SHADES DARKER Drama, Romance 1hr 58mins R-18 sex scenes and offensive language When a wounded Christian Grey (Dornan) tries to entice a cautious Ana Steele (Johnson) back into his life, she demands a new arrangement before she will give him another chance. Wednesday 15 March 7pm Sunday 19 March 7pm</p>																	
<table border="1" style="width: 100%; border-collapse: collapse;"> <thead> <tr> <th style="width: 25%;">WEDNESDAY</th> <th style="width: 25%;">FRIDAY</th> <th style="width: 25%;">SATURDAY</th> <th style="width: 25%;">SUNDAY</th> </tr> </thead> <tbody> <tr> <td>1 Eagle Huntress 1pm XXX: Return of Zander Cage 7pm</td> <td>3 Middle School: The Worst Years of my Life 7pm</td> <td>4 Ballerina 1pm Middle School 7pm</td> <td>5 March **BOUTIQUE NIGHT ** Pork Pie 7pm</td> </tr> <tr> <td>8 Pork Pie 1pm Hidden Figures 7pm</td> <td>10 Pork Pie 7pm</td> <td>11 Hidden Figures 1pm Manchester by the Sea 7pm</td> <td>12 Manchester by the Sea 7pm</td> </tr> <tr> <td>15 Hidden Figures 1pm Fifty Shades Darker 7pm</td> <td>17 Manchester by the Sea 7pm</td> <td>18 Ballerina 1pm Patriots Day 7pm</td> <td>19 Fifty Shades Darker 7pm</td> </tr> </tbody> </table>	WEDNESDAY	FRIDAY	SATURDAY	SUNDAY	1 Eagle Huntress 1pm XXX: Return of Zander Cage 7pm	3 Middle School: The Worst Years of my Life 7pm	4 Ballerina 1pm Middle School 7pm	5 March **BOUTIQUE NIGHT ** Pork Pie 7pm	8 Pork Pie 1pm Hidden Figures 7pm	10 Pork Pie 7pm	11 Hidden Figures 1pm Manchester by the Sea 7pm	12 Manchester by the Sea 7pm	15 Hidden Figures 1pm Fifty Shades Darker 7pm	17 Manchester by the Sea 7pm	18 Ballerina 1pm Patriots Day 7pm	19 Fifty Shades Darker 7pm			
WEDNESDAY	FRIDAY	SATURDAY	SUNDAY																
1 Eagle Huntress 1pm XXX: Return of Zander Cage 7pm	3 Middle School: The Worst Years of my Life 7pm	4 Ballerina 1pm Middle School 7pm	5 March **BOUTIQUE NIGHT ** Pork Pie 7pm																
8 Pork Pie 1pm Hidden Figures 7pm	10 Pork Pie 7pm	11 Hidden Figures 1pm Manchester by the Sea 7pm	12 Manchester by the Sea 7pm																
15 Hidden Figures 1pm Fifty Shades Darker 7pm	17 Manchester by the Sea 7pm	18 Ballerina 1pm Patriots Day 7pm	19 Fifty Shades Darker 7pm																

Opunake Lions Mountain to Sea fun ride is soon

Keep this date free and dust off your bicycles – as the Mountain to Sea Fun ride proceeds on Monday March 13. The event is organised by Ian Armstrong and Nigel Robinson with help from Terry Mullin (President) and his Opunake Lions members. All money raised this year (from entry fees) will go to the Opunake Surf Lifesaving Club.

Bike Fest. (Nick Barrett of New Plymouth is one of the organisers).

The event is basically a non-competitive fun ride for bicycles. However, Energy City Motors of Hawera, a major sponsor, have donated two trophy cups – for the first woman to complete the course and likewise the first man.

The venue for the event is at the top end of Arawhata Road on Phillip Field's farm



Mountain to Sea Fun ride is happening on Monday March 13.

COMING SOON!!

HEADLANDS RETURNS UNDER NEW MANAGEMENT

41 Havelock Street, Opunake
Classic with new flavour.
Restaurant, Cafe and Takeaway.

100 TASMAN ST, OPUNAKE PH: 761 8213

The ClubHotel

Opunake

Kitchen Open

Wed-Sat 12pm-2pm/6pm-9pm

Closed Sunday & Monday or open by arrangement.

Happy Hour Tuesdays/Saturdays

5.30pm-7.30pm

Poker Wednesdays/Thursdays

RENTAL VEHICLES

ALUMINIUM SCAFFOLDING FOR HIRE

\$35 per day, \$50 weekend.

More than 6 days \$30 per day.

WATERBLASTER FOR HIRE

Petrol 3000 psi 15L/minC

Cost: Half day \$90, Full day \$120, Weekend \$130. Friday after 3pm return Monday 9am.

Bond for waterblaster and scaffolding \$50.

For more information contact Tracey or Christine at

Pleased to support this important event

PICKERING MOTORS

11 TENNYSON ST OPUNAKE PH (06) 761-8363
 0800 22 11 20 Email: pickering.motors@xtra.co.nz

(just below the bush line). The briefing will be held at 9.30am with the bicycle wheels expected to be rolling at 10am.

The ride ends at Opunake Beach just midday or thereabouts. Prizegiving will be at 1pm back at the Arawhata Road venue. (Pickering Motors of Opunake have kindly provided a bus to take participants back to the start). Apart from the two trophy cups there will be many spot prizes, which have been generously provided by the sponsors.

With safety the major consideration, 80% of the course is on farm tracks, 10% in the paddocks and just 10% on roads. Where a road crossing is unavoidable the Police will be on hand - such as in the vicinity of Orimupiko Marae on Eltham Road. Quite a few farm underpasses are involved. "This allows tired participants to stop and pull



An event for the whole family.

out if they need to," points out Ian. The organisers are grateful to the various farm owners for allowing their farms to be much of the course. Nigel commented, "If it wasn't for these farmers it would be a very short course."

Last year over 250 participants took part. "We

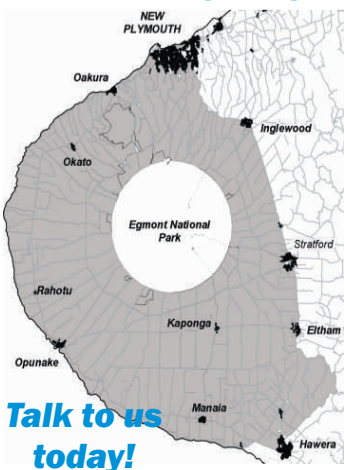
hope it's at least the same number this time," comments Nigel. However, he adds, "We can certainly cater for more."

The organisers look forward to expected sunshine, as well as many participants armed with sunscreen, water bottles and helmets to make this an optimally successful event.

If you'd like to know more, such as the layout of the course, access the Opunake website where you'll also find entry forms. For the budget conscious "If you enrol by March 1 there is a discount," explains Ian.

Phone Ian 06 761 8052 or Nigel 06 761 7220 if you want further information.

WANT TO DO BUSINESS IN OUR AREA?



Opunake and Coastal News is distributed free to every home & business within the rural area, bounded in the north by the New Plymouth city border, extending east to Egmont Village and around to the edge of Stratford, south to Hawera city border and inland to Kaponga & Eltham.

We want to be involved with your business. Call today and discuss your marketing options with us.



OPUNAKE & COASTAL NEWS

Promote your business or event in our area, call us on:

Ph/Fax: 06 761 7016 - 23 Napier Street, Opunake
 or e-mail us: ads@opunakecoastalnews.co.nz



XLT Ranger from **\$42,690 + ORC**

Proud to support the Opunake Lions Club Mountain to Sea Ride



All new Mustang from **\$59,880 + ORC**

Order yours today!

Energy City Motors
 Your South Taranaki Ford Dealer
 Paul and Grant Cnr High & Caledonia Sts, Hawera | 06 278 4044

SALES: Paul Plumtree | 027 703 7763
 Grant Crawshaw | 027 441 9812
 FINANCE: Dean Walker | 027 247 8188
 SERVICE: Greg Sandilands | 027 448 5799

